

CITY OF SALEM, MASSACHUSETTS

BROADWAY WATER MAIN REPLACEMENT PROJECT

FEBRUARY 2022



PROJECT LOCATION

LOCUS MAP (NO SCALE)

DRAWING INDEX:

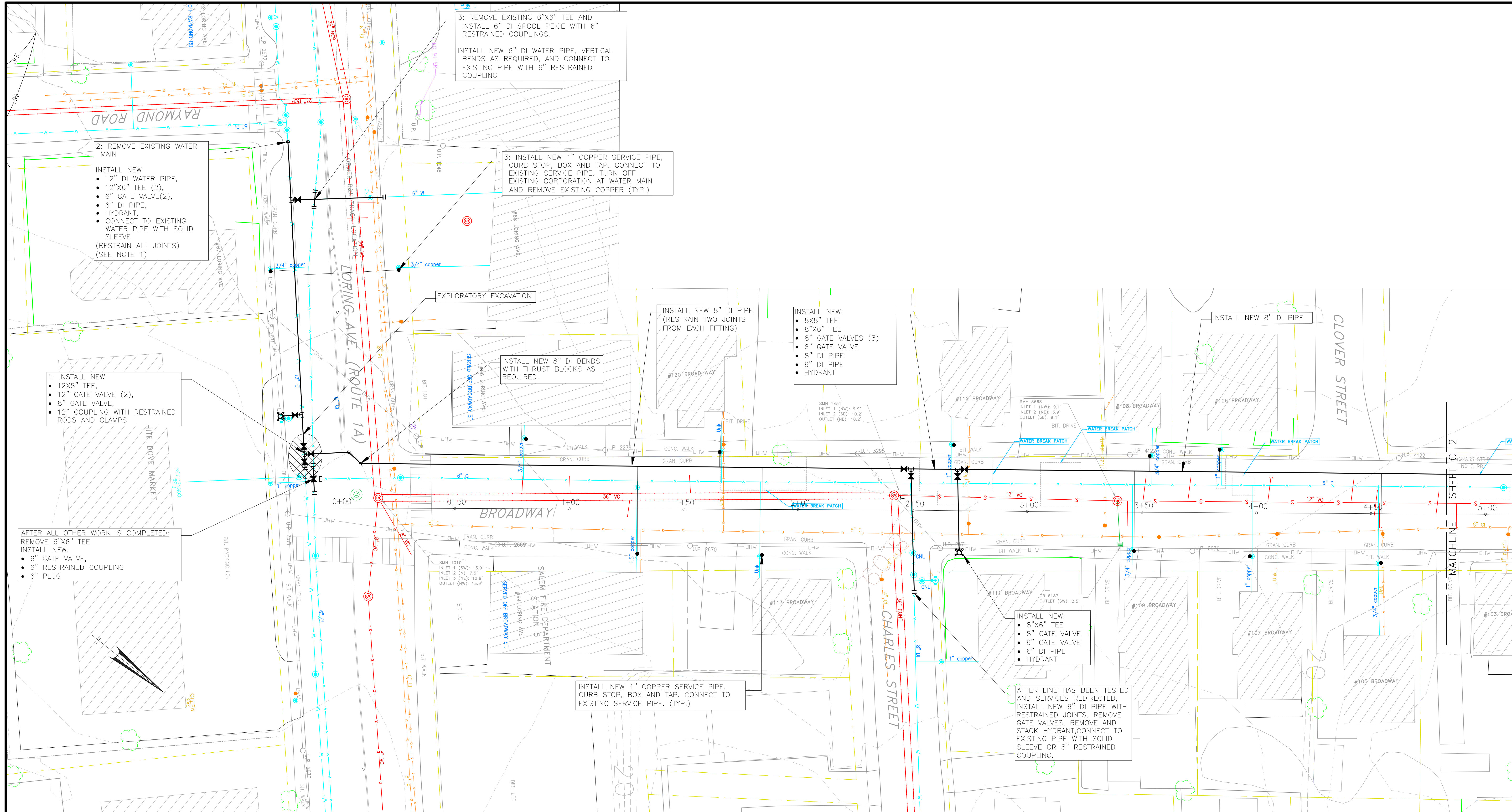
G-1	COVER PAGE
C-1 to C-2	UTILITY PLANS

NEW ENGLAND CIVIL ENGINEERING CORP.



265 Essex Street
 Suite #102
 Salem, MA 01970

 (978) 741-7401



PLAN

SCALE: 1" = 20'



NOTES

1. PRIOR TO RELAYING LORING AVE WATER MAIN, CONFIRM IF FIRE AND DOMESTIC SERVICES ARE CONNECTED TO THE EXISTING 6" WATER MAIN.

Client	CITY OF SALEM, MASSACHUSETTS
Project	BROADWAY WATER MAIN REPLACEMENT PROJECT
	BROADWAY

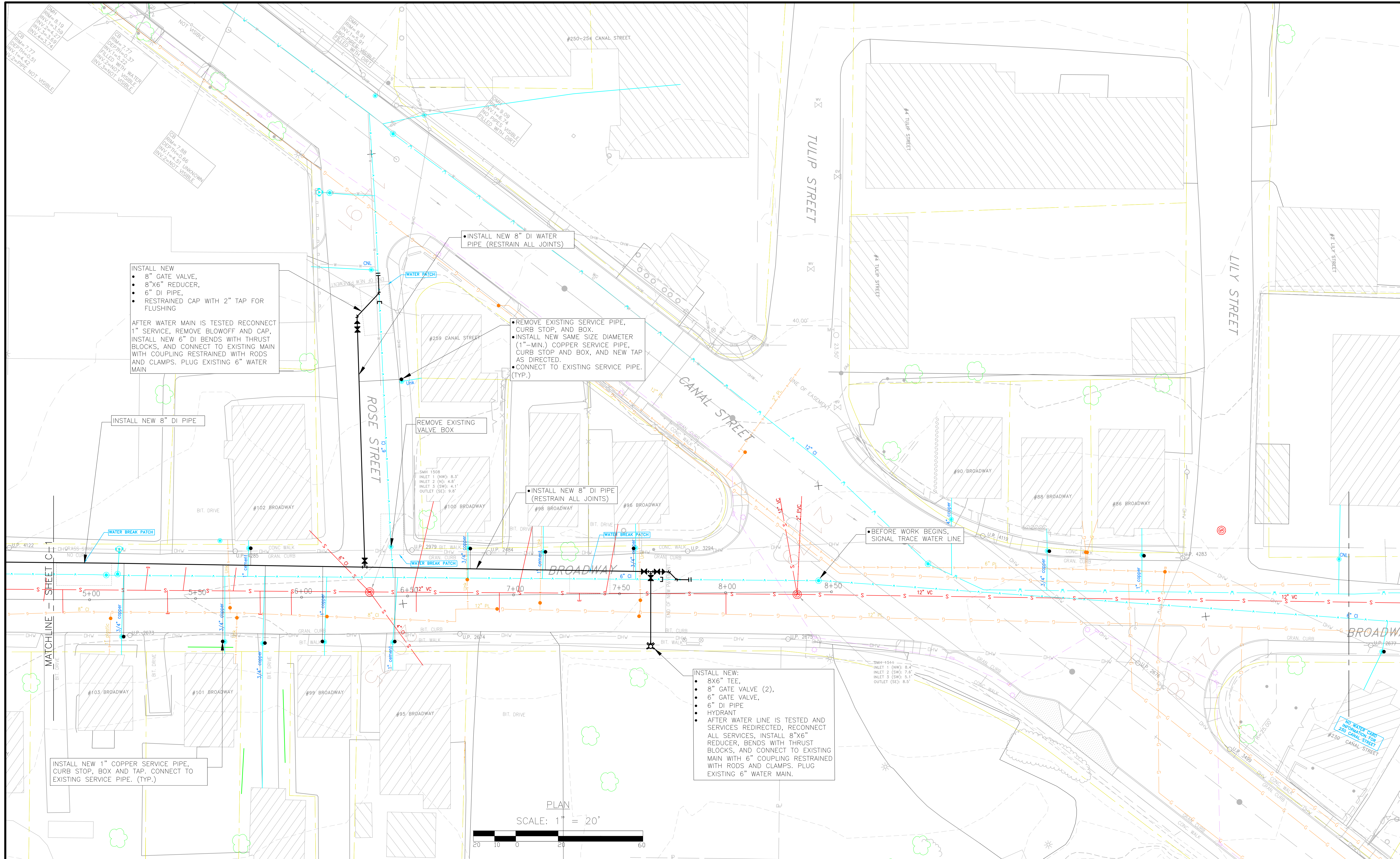
Scale	1"=20'
Date	11/2/2021
Job	Salem-Broadway
Designed by	WMR
Drawn by	JJD/RLM
No.	
Description	
Date	
File:	W:\Salem\Water Work\Horton Broadway\CAD\Broadway Horton Drawing.dwg



New England Civil Engineering Corp.

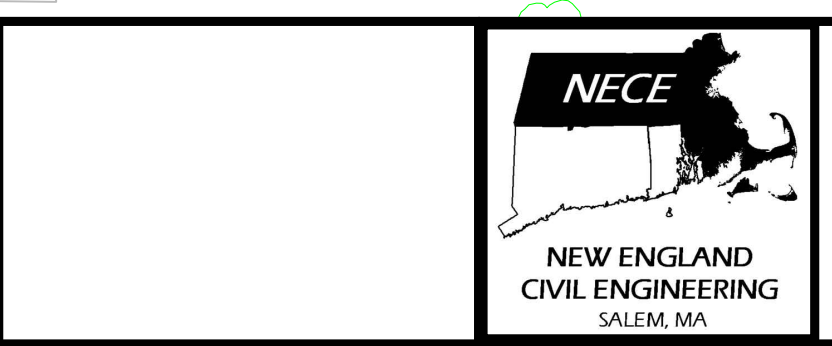
265 Essex Street, Suite 102
SALEM, MASSACHUSETTS

Sheet	C-1
-------	-----



Client	CITY OF SALEM, MASSACHUSETTS
Project	BROADWAY WATER MAIN REPLACEMENT PROJECT
	BROADWAY

Scale	1" = 20'
Date	11/2/2021
Job	Salem-Broadway
Designed by	WMR
Drawn by	JJD/RLM
No.	
Description	
Date	
File:	W:\Salem\Water Work\Horton Broadway\CAD\Broadway Horton Drawing.dwg



New England Civil Engineering Corp.
 265 Essex Street, Suite 102
 SALEM, MASSACHUSETTS

Sheet
C-2