



# Endicott Street Study

Salem, MA

Presented by  
VHB

April 11, 2017

# Overview

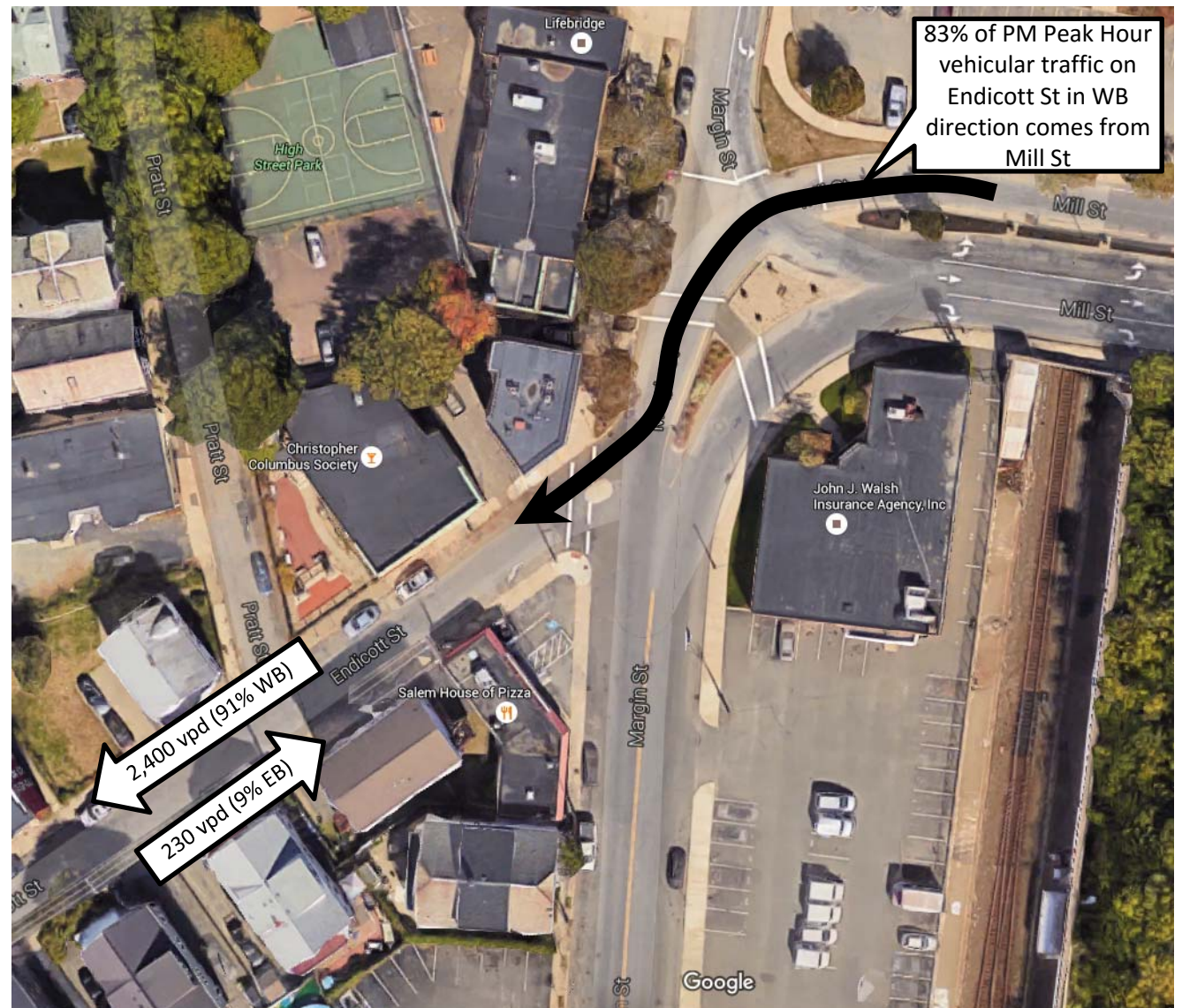
- Recap of last year's meeting
  - Traffic data collected
  - Previously recommended improvements
- Margin Street concept
- Temporary (pilot program) one-way Endicott Street



# Existing Conditions

## Endicott Street at Margin Street – Vehicular Traffic

- ATR Data
  - 2,400 WB (91%)
  - 230 EB (9%)
  - 85<sup>th</sup> percentile speed=22MPH
- AM Peak
  - 184 vph WB
  - 6 vph EB
- PM Peak
  - 223 vph WB
  - 22 vph EB



# Potential Improvements – Endicott St at Margin St

- Sidewalk extension, tighten radius so vehicles need to reduce speed taking a right-turn from Margin Street onto Endicott Street
- Shorten Endicott Street crosswalk (resulting from curb extension)
- Consider high intensity crosswalk
- Add STOP line
- Consider pedestrian crosswalk signage
- Prohibit parking in intersection



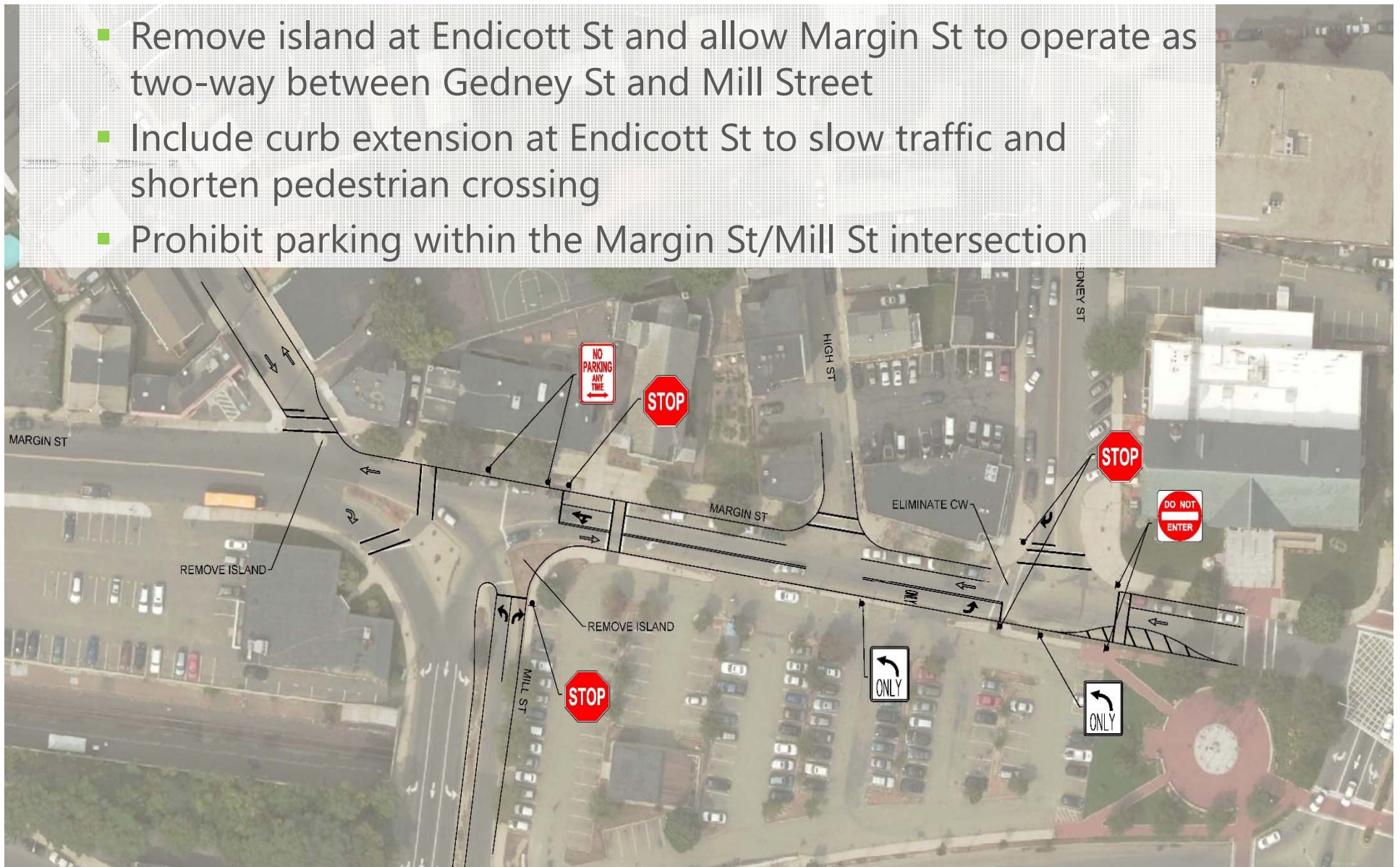
# Potential Improvements – Endicott St at Summer St

- Provide “zebra striped” crosswalks across Endicott Street east, Summer Street north/south
- Provide stop lines at approaches
- Provide handicapped ramps at Endicott Street east, Summer Street north/south
- Prohibit parking at the intersection approaches



# Consider: Modify Margin Street (two-way)

- Remove island at Endicott St and allow Margin St to operate as two-way between Gedney St and Mill Street
- Include curb extension at Endicott St to slow traffic and shorten pedestrian crossing
- Prohibit parking within the Margin St/Mill St intersection



# Consider: One-way Endicott Street (eastbound)

- Endicott Street one-way eastbound
- Post No-thru traffic signs on Prescott Street
- Can be combined with previously proposed geometric changes to reduce pedestrian crossing if desired



Laura Castelli | [Lcastelli@vhb.com](mailto:Lcastelli@vhb.com) | 617.607.2764

[www.vhb.com](http://www.vhb.com)

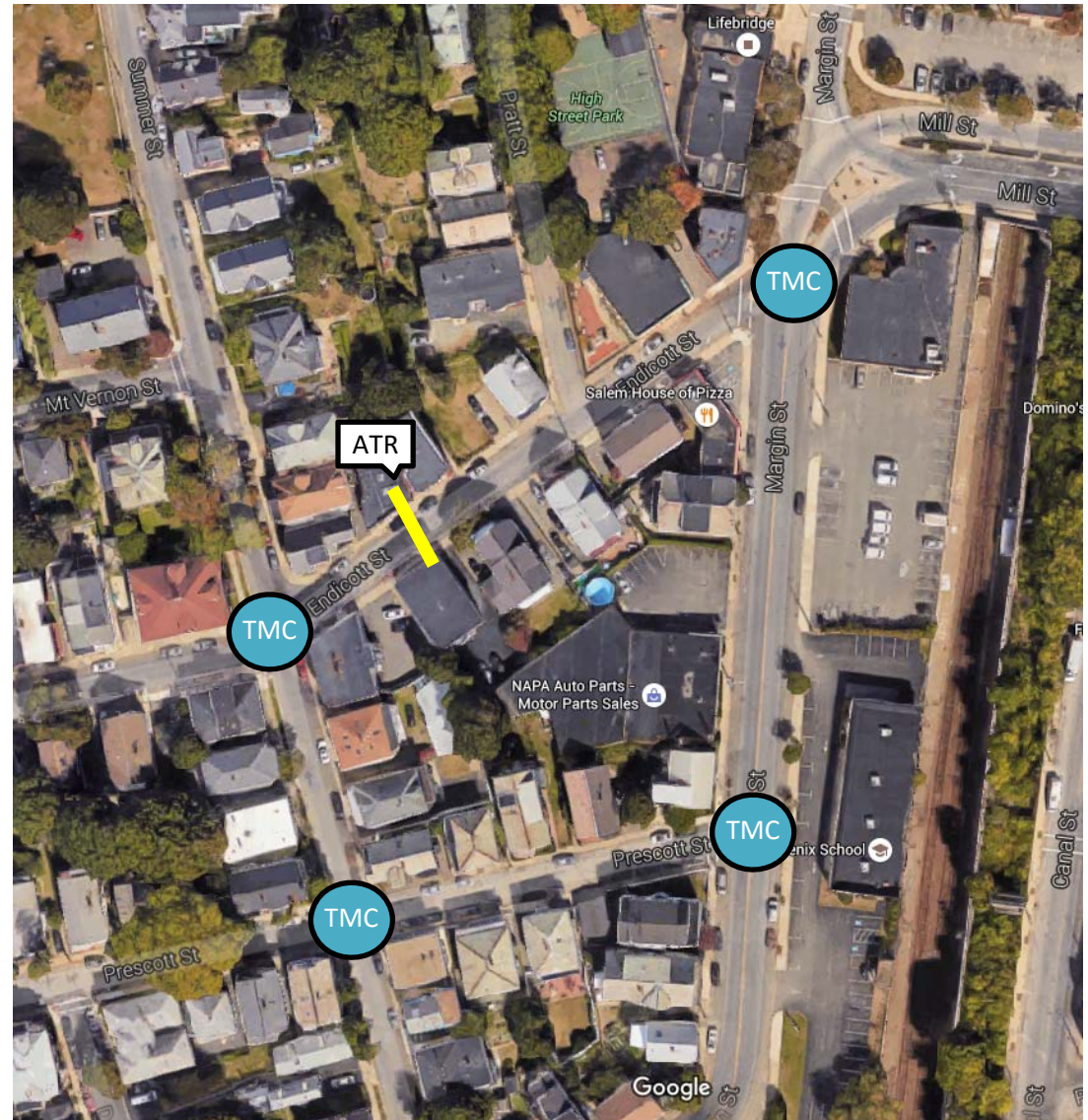


Offices located throughout the east coast



# Data Collection

- Traffic Counts
  - Turning Movement Counts (TMC) vehicles, pedestrians, bicyclists, trucks
  - Automatic Traffic Recorder (ATR) on Endicott Street: speed, volume, classification
- Field Observations – April 1, 2016
- Crash Data
  - Mass Highway 2011-2013
  - Salem Police Records 2014-2016



# Existing Conditions

## Endicott Street at Margin Street – Ped/Bike Data

- Illegal pedestrian crossing activity during observations
- Long crossing across Endicott Street due to geometry of corner
- 1 cyclist on Margin Street during peak hours
- 21 NB/16 SB AM Peak Hour Ped crossings
- 10 NB/14 SB PM Peak Hour Ped Crossings



# Existing Conditions

## Endicott Street at Summer Street

- Missing:
  - Crosswalks
  - Stop bars
- No handicapped ramps at Endicott Street east, Summer Street north/south
- Parking proximate to the intersection reduces sight lines



# Existing Conditions Crash History

■ With Pedestrian - 2015

■ With Bicyclist - 2012

- Margin/Endicott St listed as Highway Safety Improvement Program (HSIP) eligible for Ped/Bike
- 17 total crashes

