



Mayor Dominick Pangallo

PROPOSED COASTAL RESILIENCY OVERLAY DISTRICT MAP

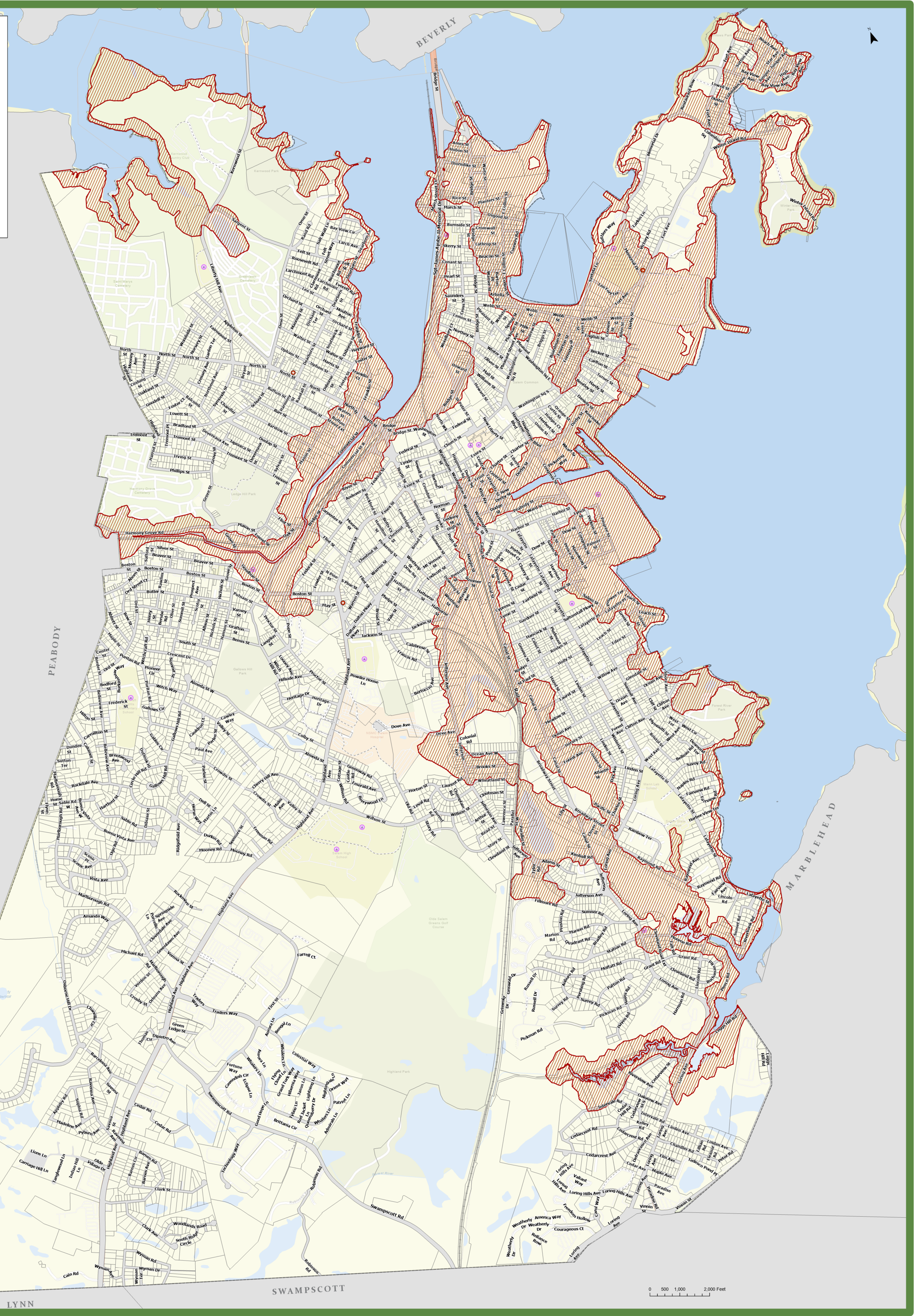
Salem, Massachusetts

Map Date: March 2024

Legend

- Proposed Coastal Resiliency Overlay
- Salem Boundary
- Building Footprints
- Fire Stations
- Salem Schools
- Tax Parcel
- Water Parcel

2.3.5 Islands. All islands within the city limits of Salem including, but not limited to, the islands known as Great Misery, Little Misery, Baker's, North and South Gooseberry's, Eagle, Cat, Tinker's, Coney, Great Haste, Juggle, and the Marblehead Rock shall be construed as being in a residential-conservation district, whether or not any such islands are shown or designated on the zoning map.



0 500 1,000 2,000 Feet

LYNN

SWAMPSCOTT

MARBLEHEAD

BEVERLY

PEABODY