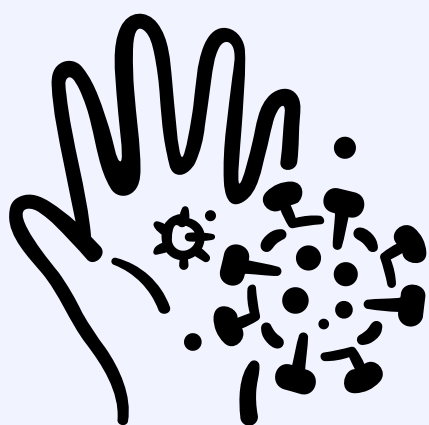
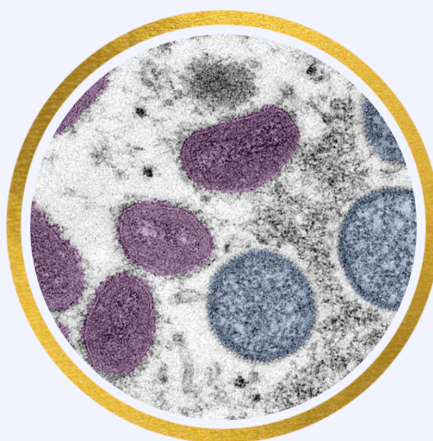


# ALL ABOUT MONKEYPOX

---

## What Is Monkeypox?

Monkeypox is a rare disease caused by infection with the monkeypox virus (MPV). MPV symptoms are similar to that of smallpox, but are far milder. MPV is **rarely fatal**.



## How Is Monkeypox Spread?

- Close contact with an infectious rash, lesion, or bodily fluid
- Contact with fabrics (towels, linens) and other surfaces that have been used by an infected person
- Large respiratory droplets for prolonged face-to-face interaction (>3 hours)

## What Are Symptoms of Monkeypox?

- Fever
- Headache
- Muscle aches and backaches
- Swollen lymph nodes
- Chills
- Exhaustion
- A rash that is located on or near the genitals or anus, but could also be on other areas like hands, feet, chest, face, or mouth



## What Should I Do If I Think I Was Exposed to Monkeypox?

- Contact your healthcare provider if you think you have had an exposure to MPV or are exhibiting symptoms
- Contact your local board of health and notify the health department
- **Monitor** symptoms for 21 days after initial exposure

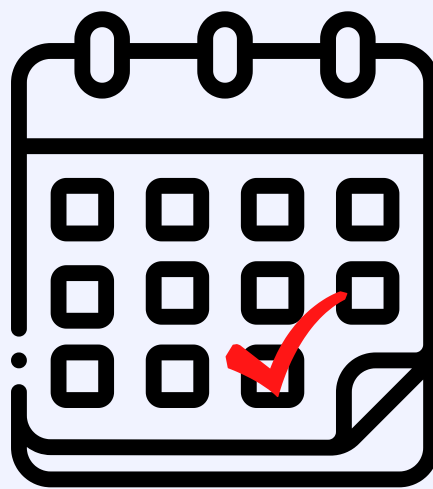


# ALL ABOUT MONKEYPOX

---

## What Is Monitoring?

If you are not experiencing symptoms you can resume normal daily activities. It is advised that you look out for symptoms up to 21 days after exposure. It is recommended to take your temperature twice a day if possible.



## What Should I Do If I Have Been Diagnosed With Monkeypox?

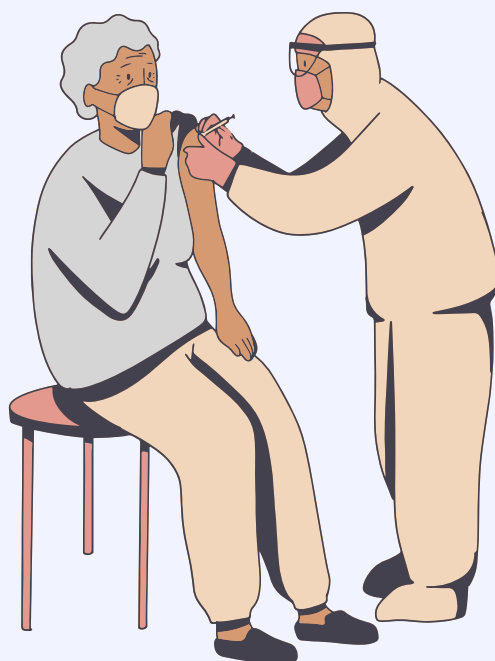


- Isolate at home in a room separate from other people
- Limit your interaction with pets
- Use separate towels, linens, utensils, etc.
- Do your own laundry (avoid shaking any dirty laundry)
- Open windows for ventilation
- Encourage everyone in the house to clean their hands regularly with soap and water and/or an alcohol-based hand sanitizer
- Avoid the use of contact lenses
- Wear a well-fitted surgical mask
- Cover any rashes with clothing or bandages

## Can I Be Vaccinated Against Monkeypox?

CDC guidance advises only high-risk contacts to be vaccinated against MPV. High risk contacts are defined as known contacts identified by public health officials through case investigation, contact tracing, and risk assessment. These individuals must have had:

- A sexual partner in the past 14 days who was diagnosed with MPV
- Multiple sexual partners in the last 14 days in a jurisdiction where there are known MPV cases



**Public Health**  
Prevent. Promote. Protect.

# Vaccination Sites in Massachusetts

Fenway Health (**Boston**):

617-927-6060

Monday through Friday 9 AM - 5 PM

MGH Sexual Health Clinic (**Boston**):

617-726-2748

Monday through Friday 8 AM - 4:30 PM

BMC (**Boston**):

617-414-2803

Monday through Friday 9 AM - 5 PM

Outer Cape Cod Health Services (**Provincetown**):

508-905-2888

Monday through Friday 8 AM - 5 PM

JRI Health (**Framingham**):

508-935-2960

Mondays and Fridays 8 AM - 4 PM

Tuesdays, Wednesdays, Thursdays 8 AM - 6:30 PM

Greater Lawrence Family Health Center (**Lawrence**):

978-557-2319

Monday through Friday 8 AM - 4 PM

Health Innovations (**Randolph**):

339-987-1956

Monday through Friday 10 AM - 5 PM

Baystate Medical Center Brightwood Health Center (**Springfield**):

413-794-4458

Monday through Friday 8 AM - 5 PM

Tapestry Health (**Springfield**):

413-586-2016, extension 121

Monday through Friday 8 AM - 4 PM

AIDS Project Worcester and University of Massachusetts Medical Center (**Worcester**):

508-755-3773, extension 113

Monday through Friday 9 AM - 5 PM

Seven Hills Behavioral Health (**New Bedford**):

774-634-3725

Monday through Friday 9 AM - 5 PM

Cambridge Health Alliance (**Cambridge/Somerville**):

781-338-0104

Monday through Friday 9 AM - 5 PM

East Boston Neighborhood Health Center (**Boston**):

617-568-4500

Monday through Friday 8 AM - 5 PM

Vaccines also available Saturdays 10 AM - 2 PM

Codman Square Community Health Center (**Dorchester**):

617-825-9660

Monday through Friday 8:30 AM - 8:30 PM

Vaccines also available Saturdays 9 AM - 3 PM