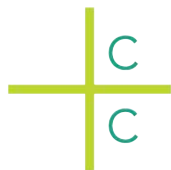


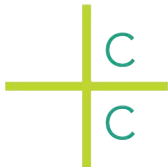
DESIGN GOALS

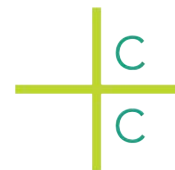
- **Strengthen successful existing programs**
- **Provide improved waterfront connection**
- **Add opportunities for passive recreation**
- **Plan for resiliency to climate change**



BALLFIELD OR NO BALLFIELD?

- Mixed feedback from public process
- City will not be placing high school baseball in Palmer Cove
- Online survey, working group have supported removing the ballfield
- Support for a new softball field from public meetings, city councilors

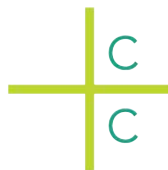




Adult Slow Pitch Softball

1 U12 Soccer Field

1 U10 Soccer Field



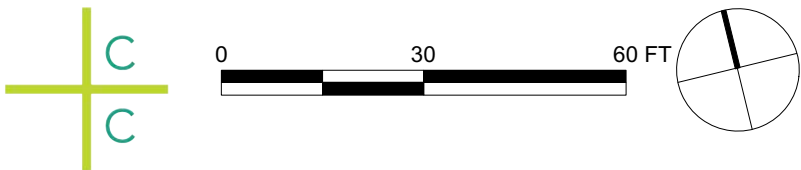


Additional basketball court

2 new play structures

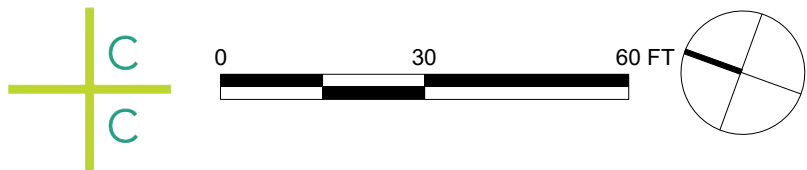
Adult fitness equipment

New benches and tables



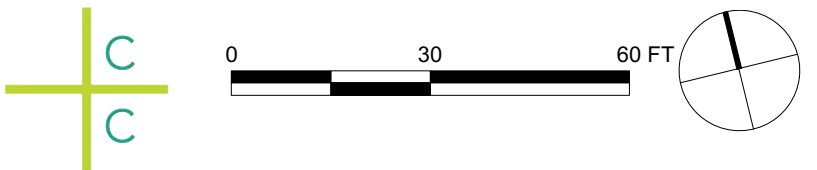
New harbor path with
bike lane and pedestrian lane

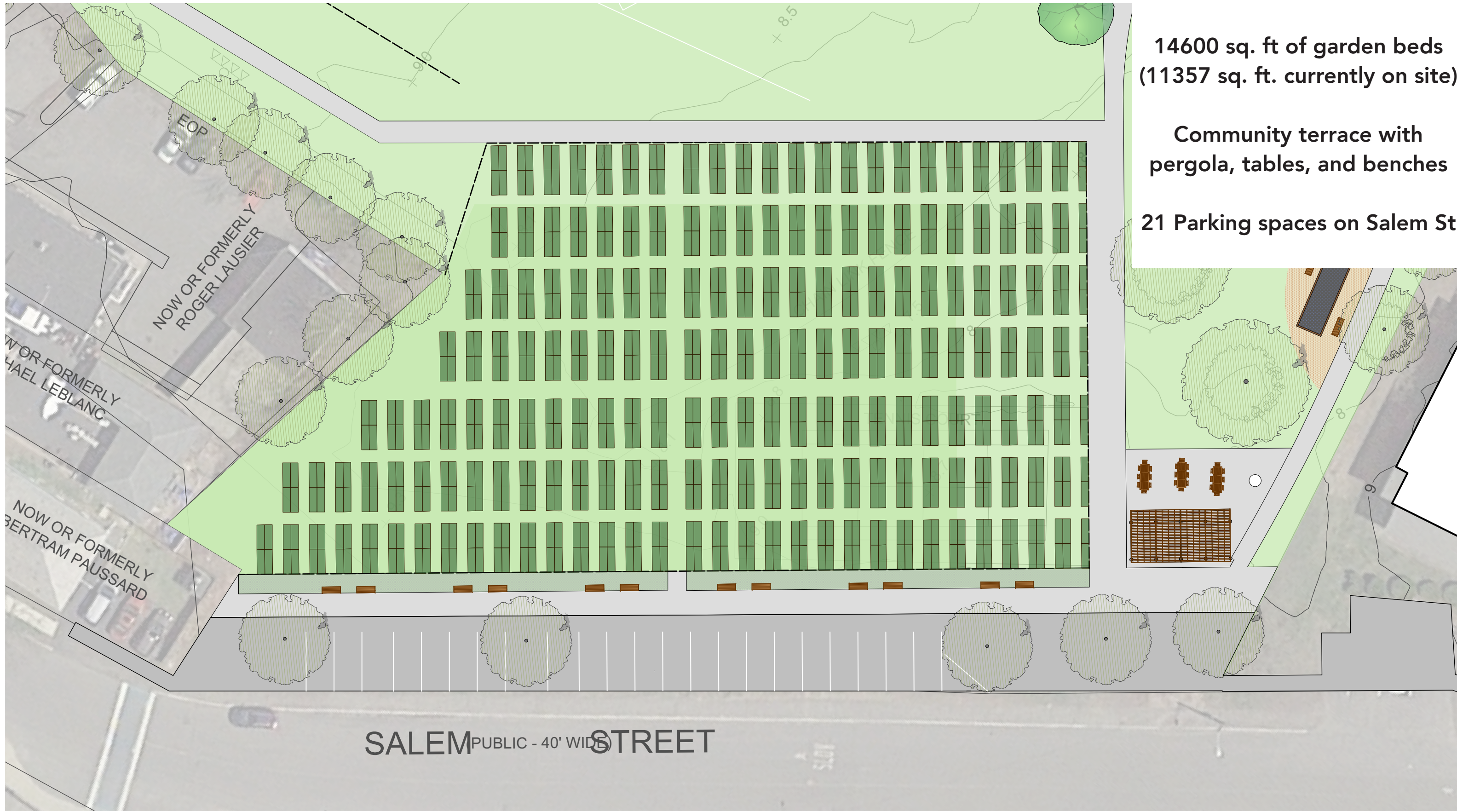
Small gathering spaces for
sitting, eating or grilling





- Walking Paths**
- New dog run**
- 1 Bocce court**
- Game tables**
- New trees**

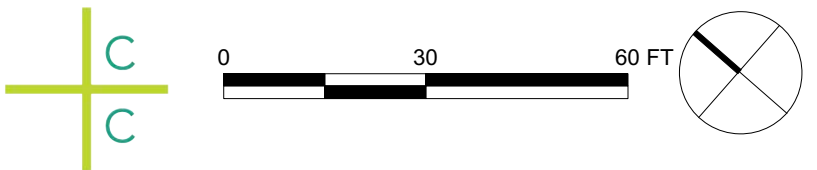


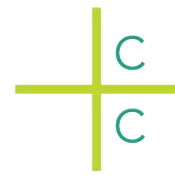


14600 sq. ft of garden beds
(11357 sq. ft. currently on site)

Community terrace with
pergola, tables, and benches

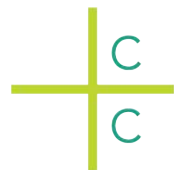
21 Parking spaces on Salem St





No Softball Field

Space for 1 FIFA
Minimum Field (45x90M)





Additional basketball court

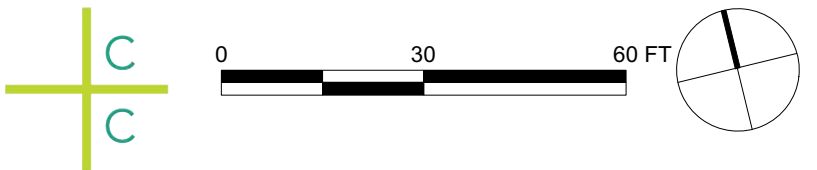
3 new play structures

Adult fitness equipment

New benches and tables

New dog run

Community terrace with pergola, tables, and benches



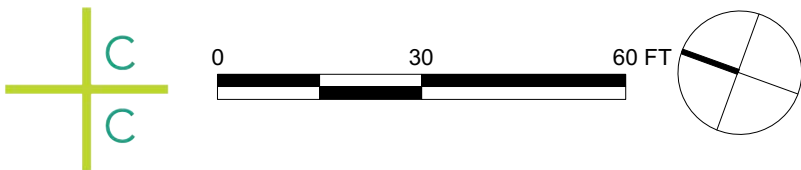


New harbor path
for bikes and pedestrians

Large gathering spaces for
cookouts and events

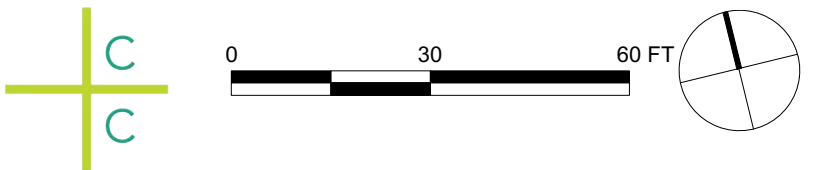
Benches

Shoreline Planting



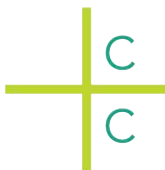


- 2 Bocce courts**
- Game tables**
- New trees**
- Walking Paths**



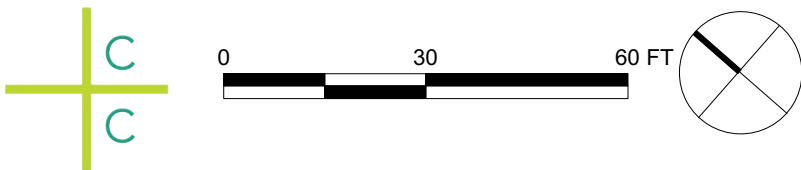
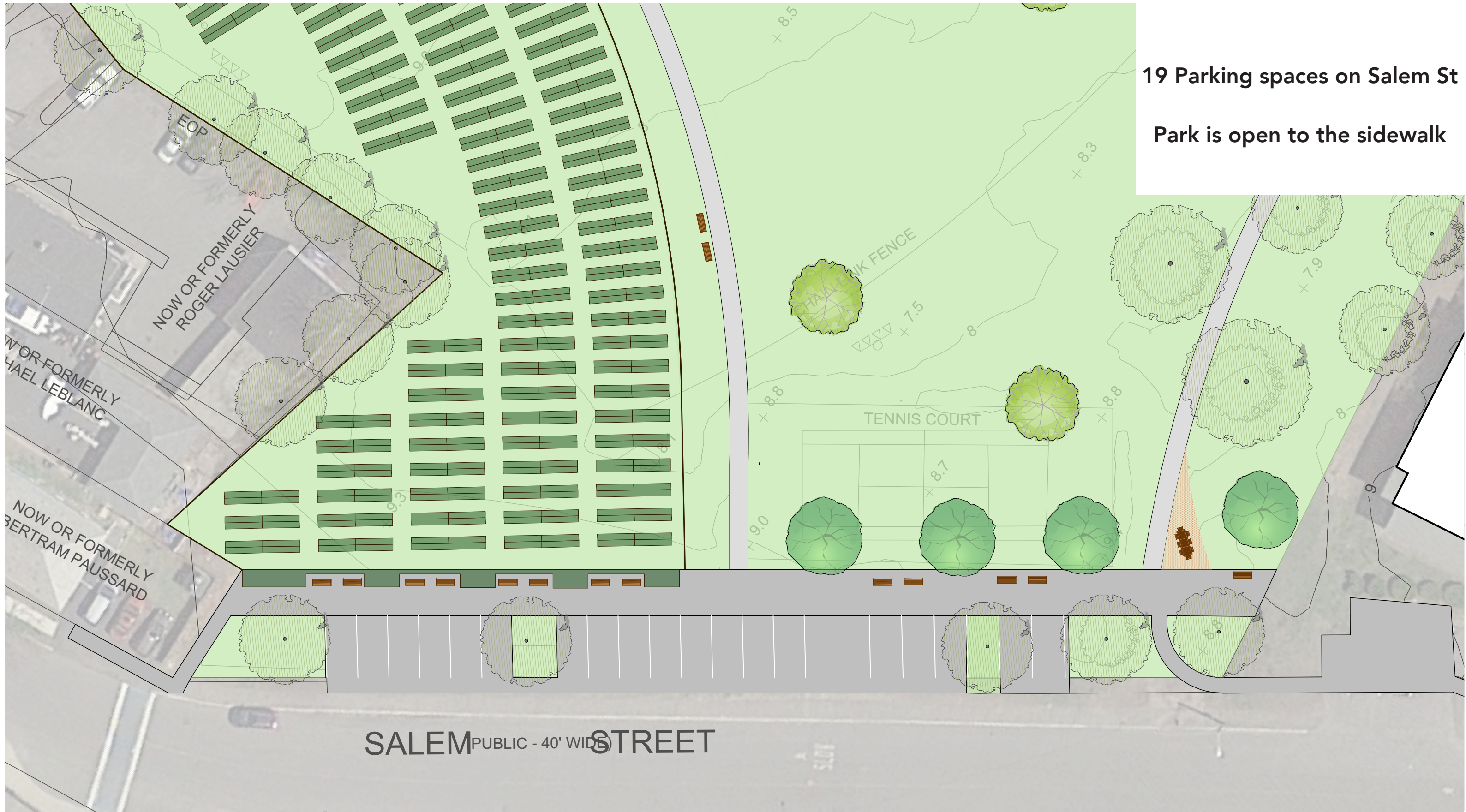


**13248 sq. ft of garden beds
(11357 sq. ft. currently on site)**



19 Parking spaces on Salem St

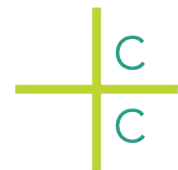
Park is open to the sidewalk



BALLFIELD



NO BALLFIELD



BALLFIELD

Adult-size slow-pitch softball field - no fence

Space for 1 U12 and one U10 Soccer field

Additional basketball court

2 play structures

Dog run (by Pioneer Terrace)

Small gathering space by the waterfront

1 bocce court

1460 sq. ft of garden beds (11357 sq. ft. currently on site)

Community Garden edge on Salem St, with community terrace

NO BALLFIELD

No Softball

Space for 1 FIFA Minimum Standard Field (45x90M)

Additional basketball court

3 play structures

Dog run by Leavitt St.

Large gathering space by the waterfront

2 bocce courts

13248 sq. ft of garden beds (11357 sq. ft. currently on site)

Salem Street open to water view, gardens off street.

Community terrace adjacent to On-Point

