

Salem Willows Park Restoration

Existing Conditions

December 18, 2018



WINTER STREET ARCHITECTS



*Pamela Hartford; Landscape
History, Design & Preservation*

HATCH



*Salem Willows Park Restoration
Community Meeting #1: Existing Conditions
Tonight's Agenda*

1. Introductions

Salem Willows Project
Salem and Hatch Project Team

2. Existing Conditions

Regional Context
Resource Areas
Existing Conditions Analysis

- Soils
- Vegetation
- Circulation & Parking
- Infrastructure
- Historic Resources
- Structures
- Site Furnishings
- Signage

3. Project Schedule and Next Steps

4. The "Hill"

5. Questions & Comments





Salem Willows Park Restoration Project

The Hatch team is working with the City to assess the conditions at Salem Willows and develop prioritized plans for restoration, specifically:

- **Existing Condition Report**
- **Schematic Design of the “Hill” area**
- **Tree and Landscape Plan for the entire site**
- **Development of the Salem Willows Plan**
- **Grant Assistance**



Salem Willows Project Team:

City of Salem

Jenna Ide, Director of Capital Projects and Municipal Operations,
jide@salem.com

Patricia O'Brien, Executive Director of Parks & Recreation Commission,
pobrien@salem.com

Deborah Duhamel, Assistant City Engineer, dduhamel@salem.com

Brittany Dolan, Sustainability and Resiliency Coordinator, bdolan@salem.com

Patti Kelleher, Historical Commission, pkelleher@salem.com

Consultant Team

Hatch (Prime Consultant)

Duke Bitsko, Principal-in-charge, duke.bitsko@hatch.com

Jason Bobowski, Senior Project Manager, Jason.bobowski@hatch.com

Hilary Holmes, Civil Engineer, hilary.holmes@hatch.com

Nick Betts, Landscape Designer, nick.betts@hatch.com

Pamela Hartford, Landscape History, Design and Preservation

Pamela Hartford, Landscape Historian, bookbosk@covad.net

Winter Street Architects

Paul Durand, Principal Architect, pdurand@wsarchitects.com

Michael Voosen Fields, Architectural Designer, mfields@wsarchitects.com

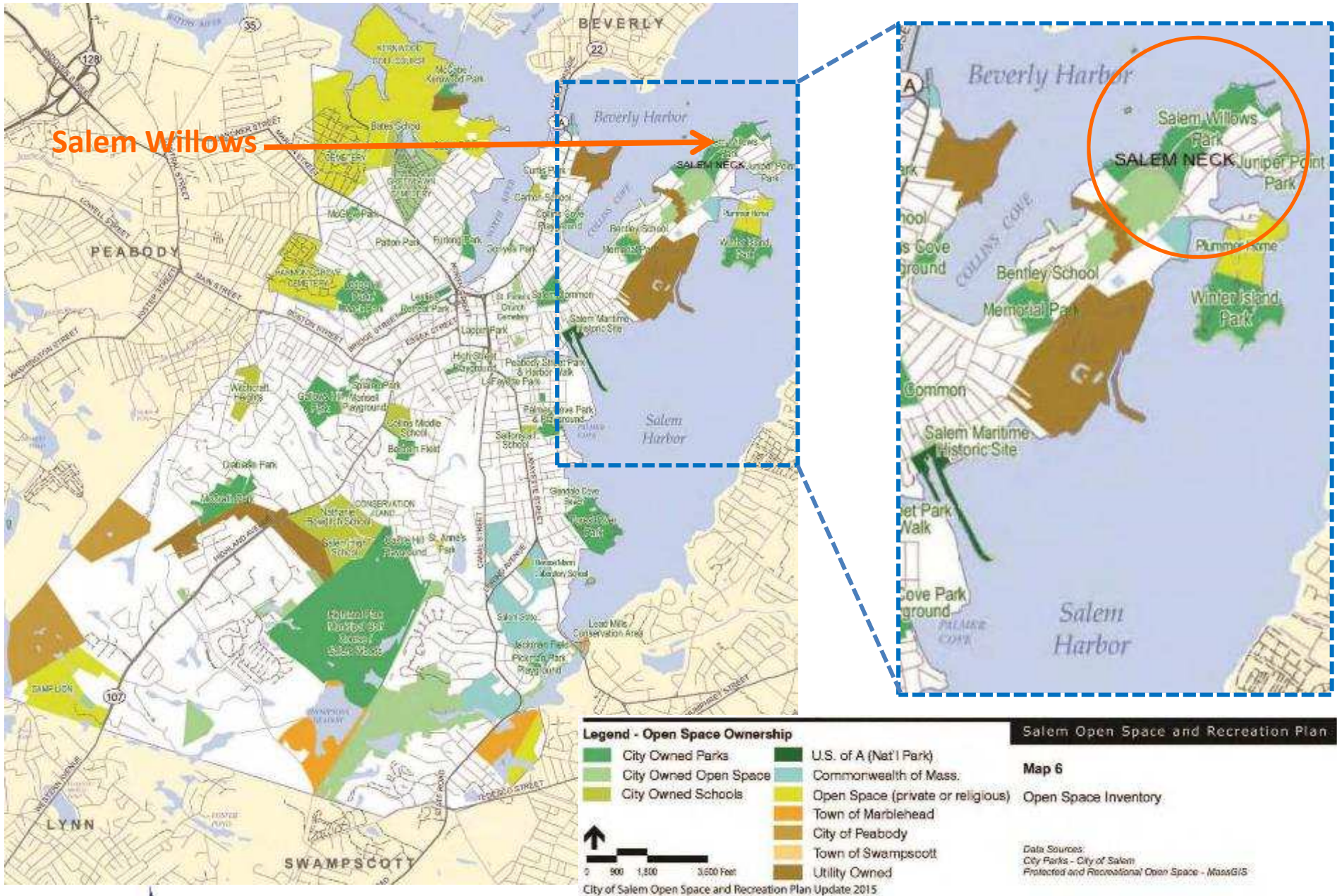
Davey Resource Group

Elizabeth McKinley, Arborist, elizabeth.mckinley@davey.com



Project Team

Salem Willows **Existing Conditions**



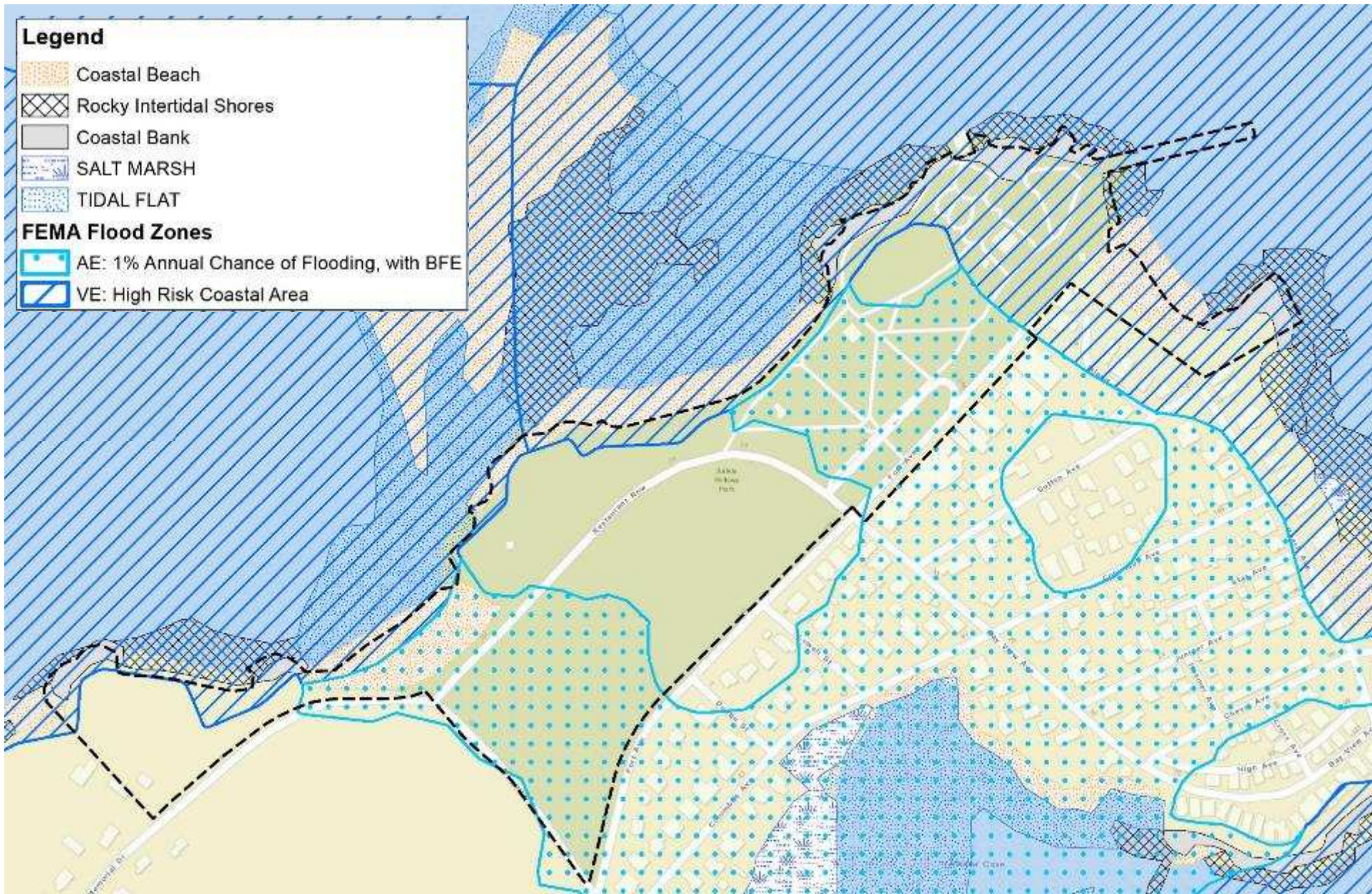


Source: Salem GIS

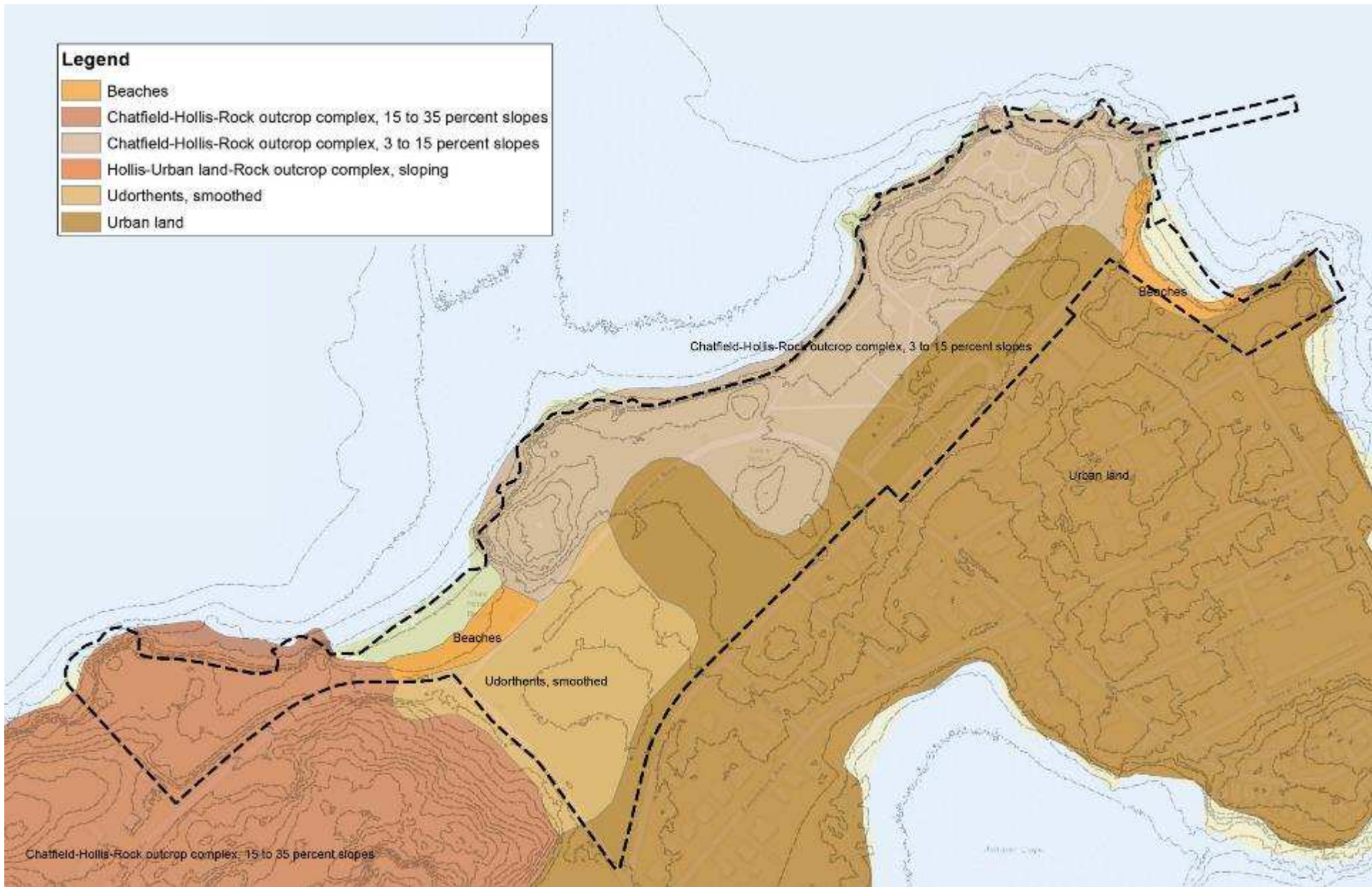


Current Aerial Photo: 2018
Salem Willows **Existing Conditions**





Source: Mass GIS



Source: Natural resources Conservation Service (NRCS)



Salem Willows **Soils**
Existing Conditions



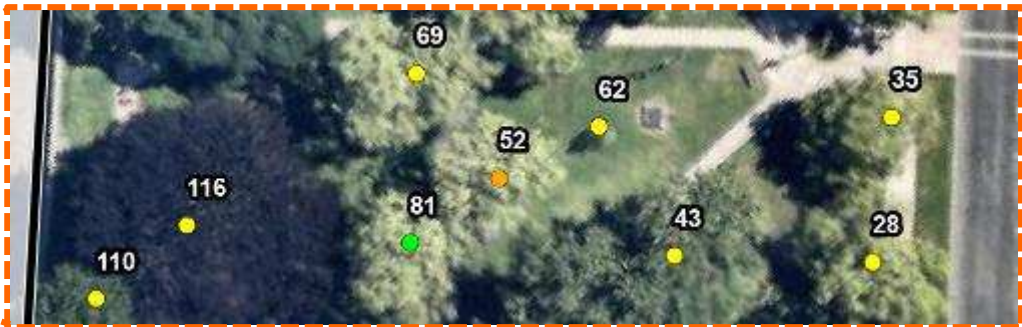
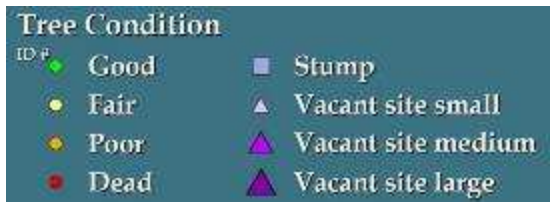
Lawn and Trees



Landscape Planters



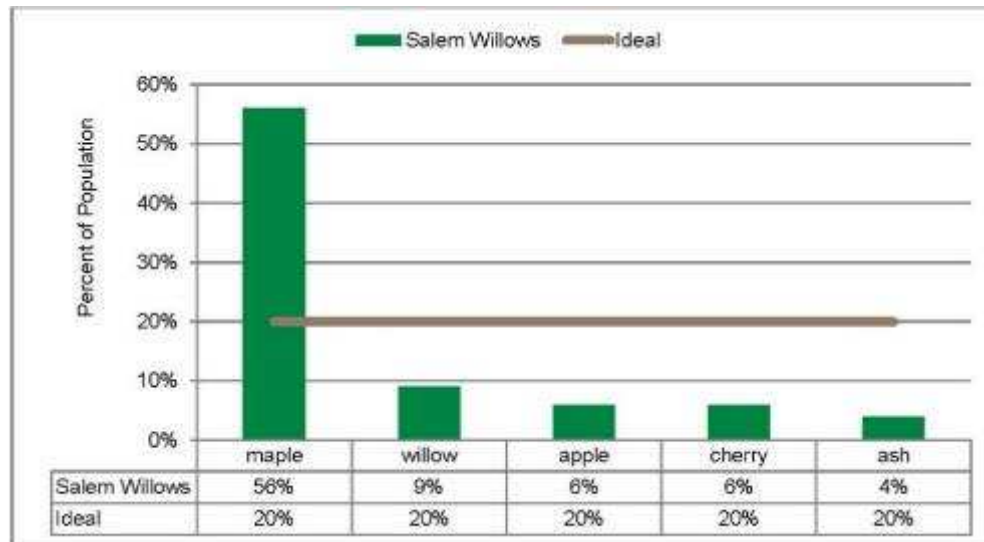
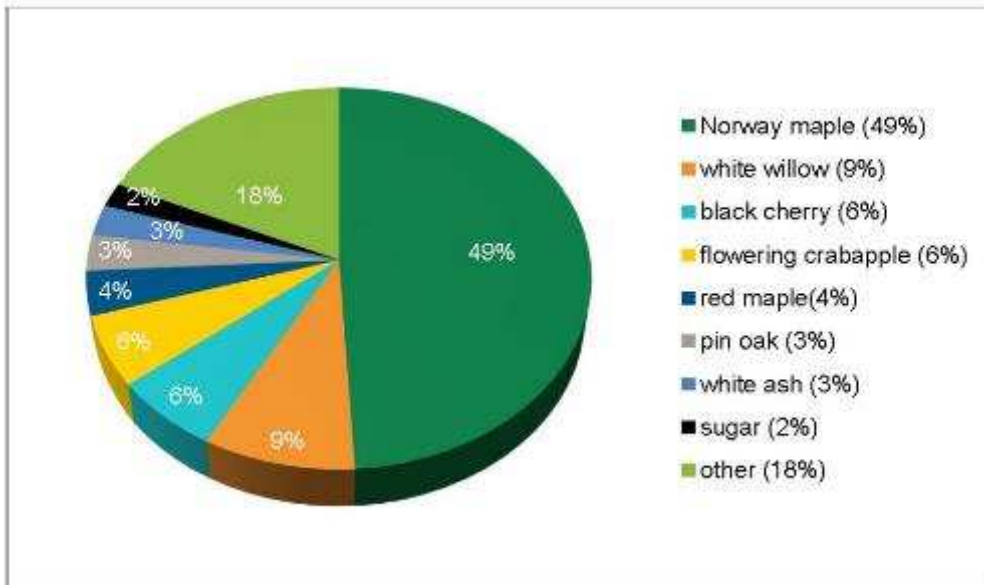
Naturalized Areas

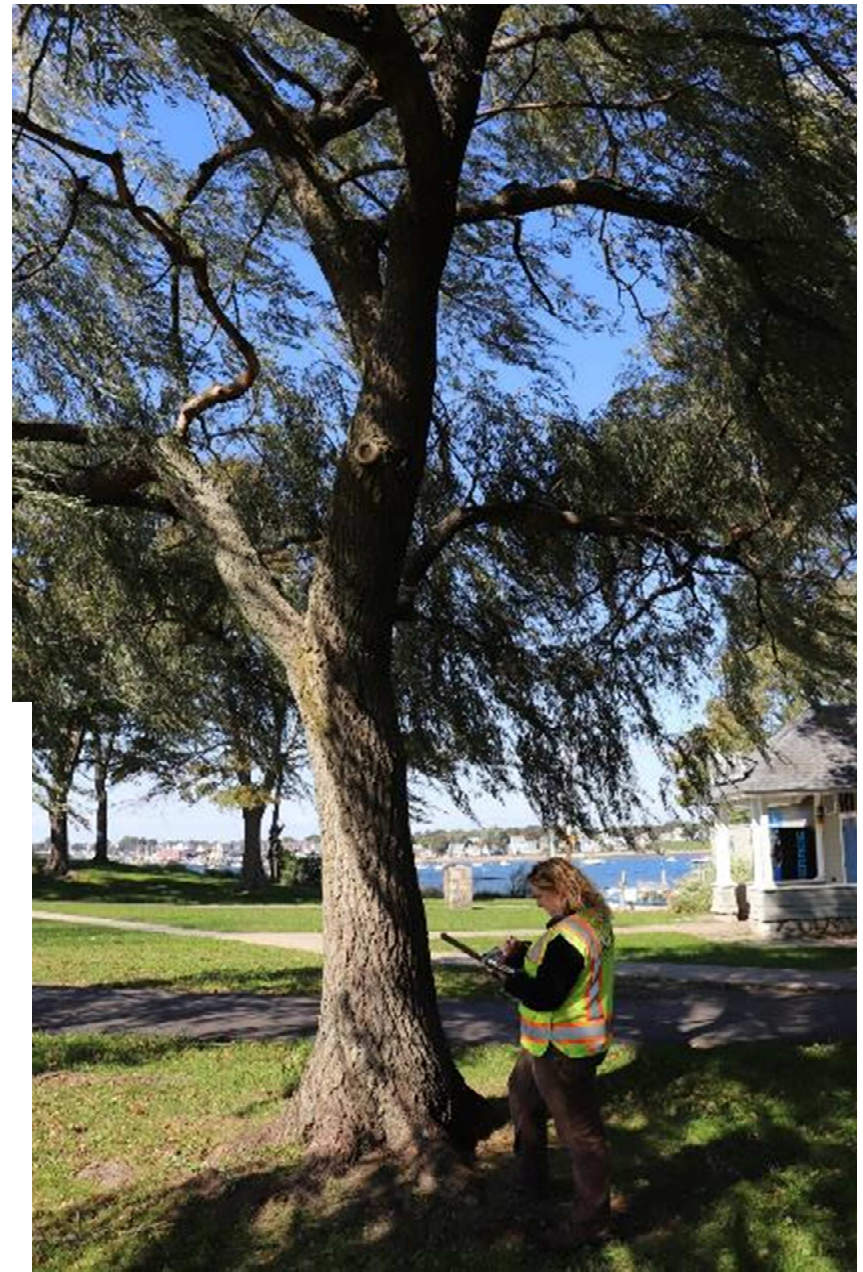
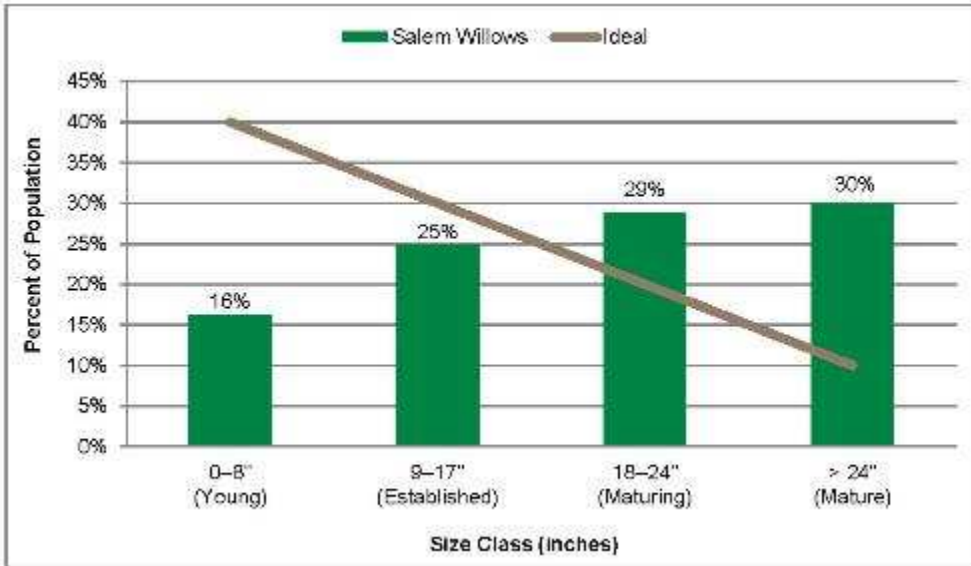
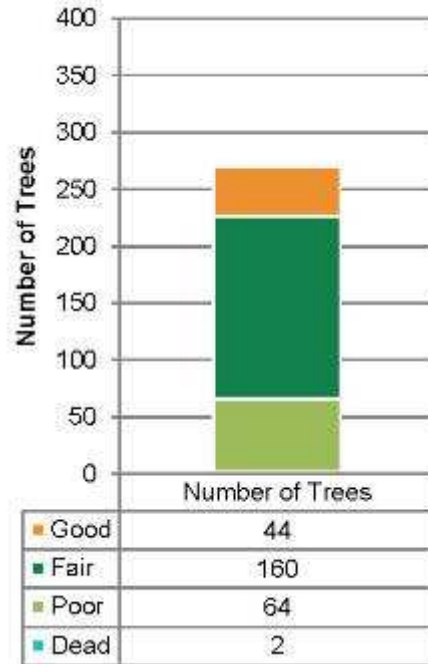


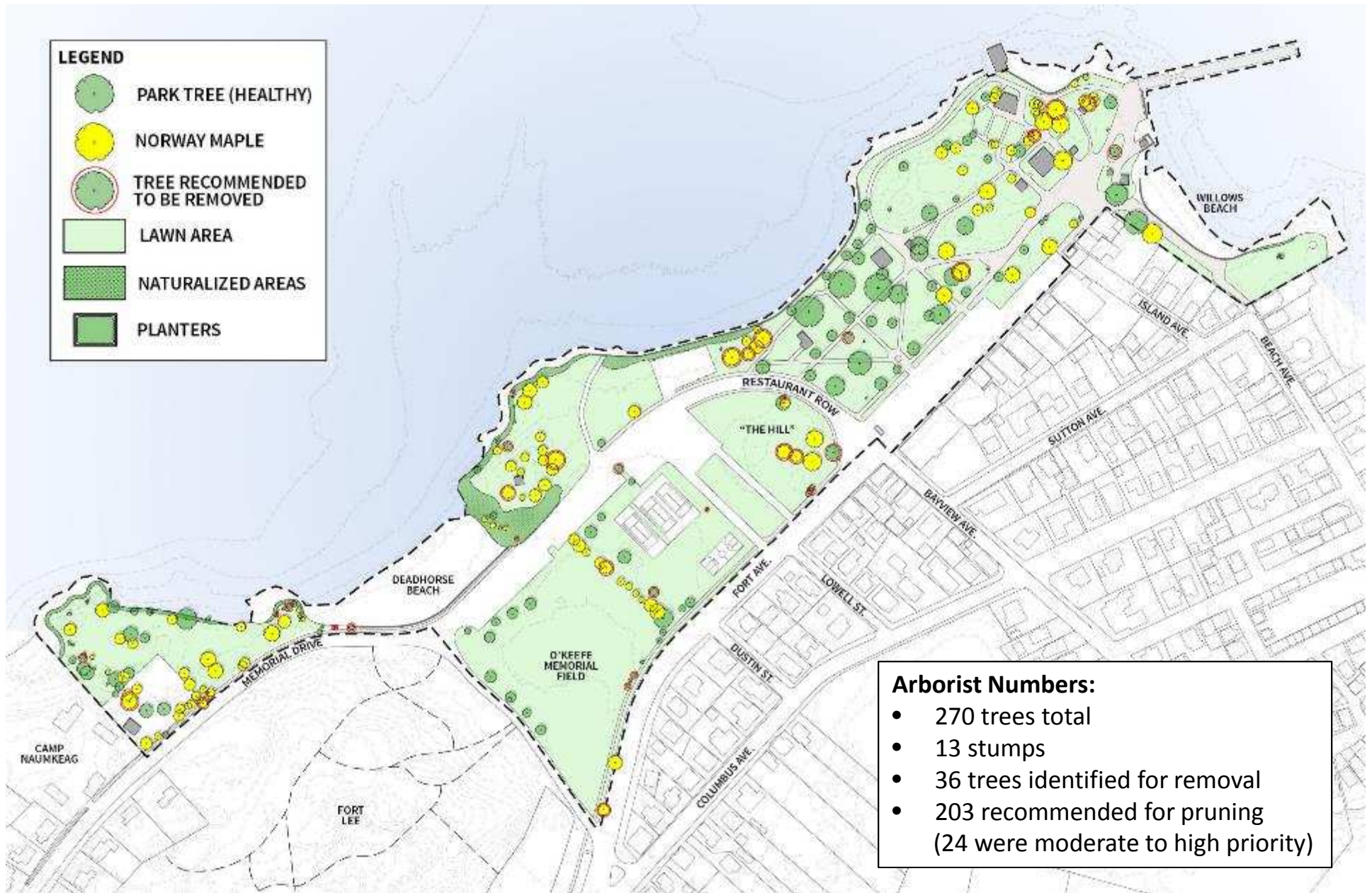
Site ID	Species	DBH	Cond	Conseq	Defects	Future Inspection	Likelihood of Failure	Primary Maintenance Need	Residual Risk	Risk Rating
8	willow, white (Salix alba)	21	Fair	Minor	Root problems	No	Probable	Prune	Low	Low
9	maple, Norway (Acer platanoides)	43	Fair	Severe	Weakly attached branches and codominant stems	No	Possible	Prune	Low	Low
10	maple, Norway (Acer platanoides)	38	Fair	Significant	Broken and/or hanging branches	No	Possible	Prune	Low	Low
11	willow, white (Salix alba)	24	Good	Minor	Missing or decayed wood	No	Probable	Prune	Low	Low

Source:
Davey
Resource
Group

Tree Inventory Salem Willows Existing Conditions









Pruning/ Removals



Soil Compaction



Root Zone Protection



User Damage



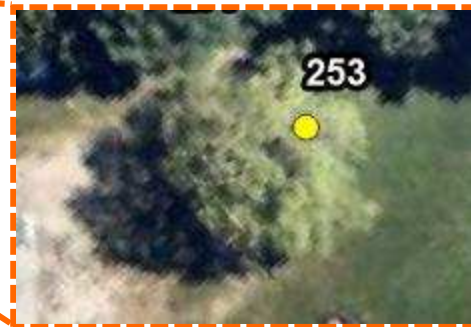
Erosion



Invasive



Poor Drainage



Farewell to Tree #253!

Source:
Davey
Resource
Group

Tree Inventory
Salem Willows **Existing Conditions**



Source: Hatch

Circulation Salem Willows **Existing Conditions**



(1891, Frank Cousins)



Circulation - Vehicular
Salem Willows **Existing Conditions**

Along The Line, Salem Willows, Mass.



B1602

HATCH

Circulation – Vehicular Parking
Salem Willows **Existing Conditions**





Source: Google Earth, June 2015



Circulation – Vehicular Parking Salem Willows **Existing Conditions**





Source: Hatch

Circulation - Pedestrian Salem Willows Existing Conditions



ADA Compliance



No Safe Pedestrian Options



Missing Sidewalk Section



Remnant Paving



Unrefined Paving limits, Paving in Need of Repair



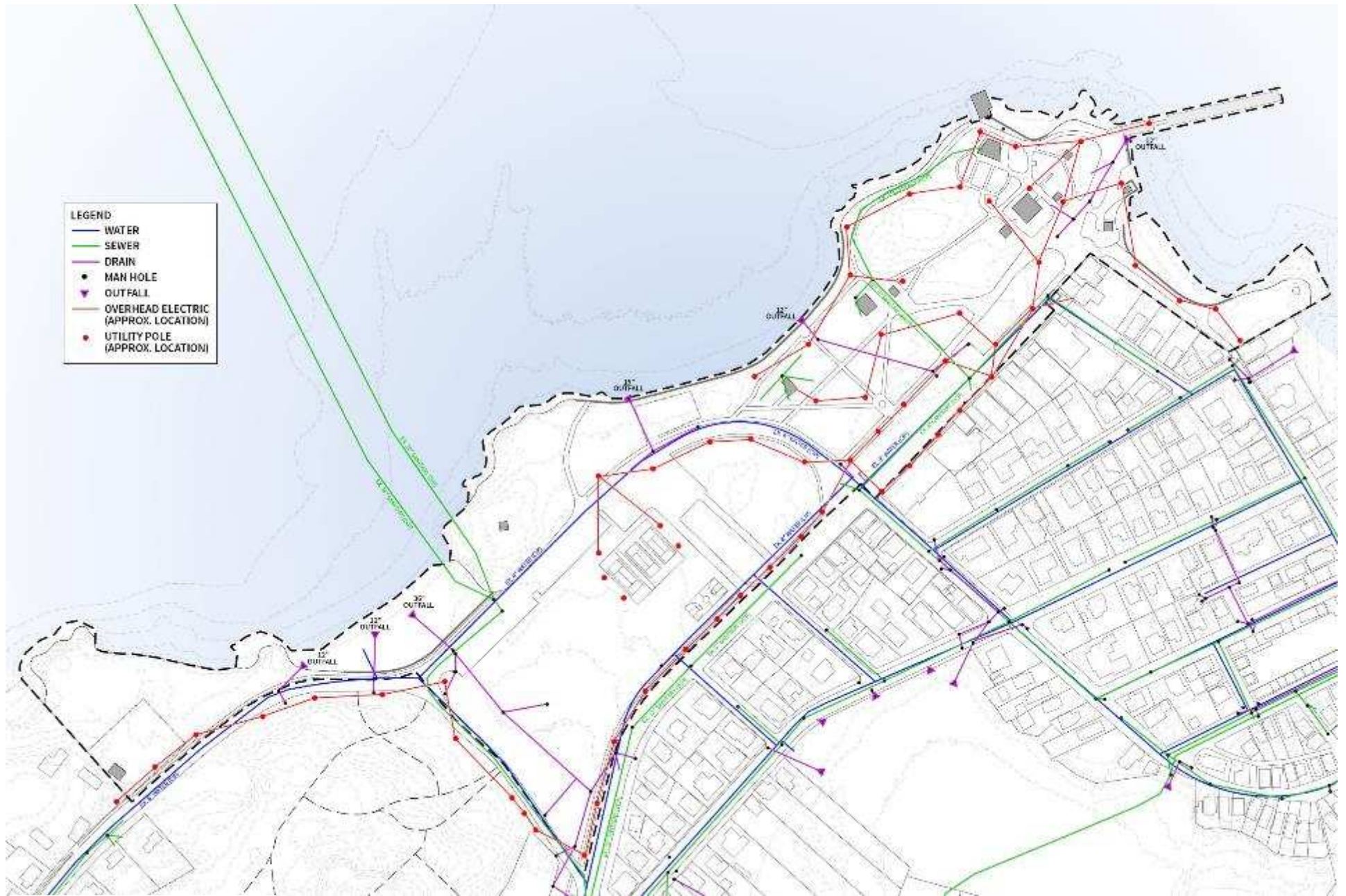
Material Changes



Lost Focal Point







Source: Hatch

Infrastructure
Salem Willows **Existing Conditions**



Lighting



Surface Drainage



Infrastructure
Salem Willows **Existing Conditions**

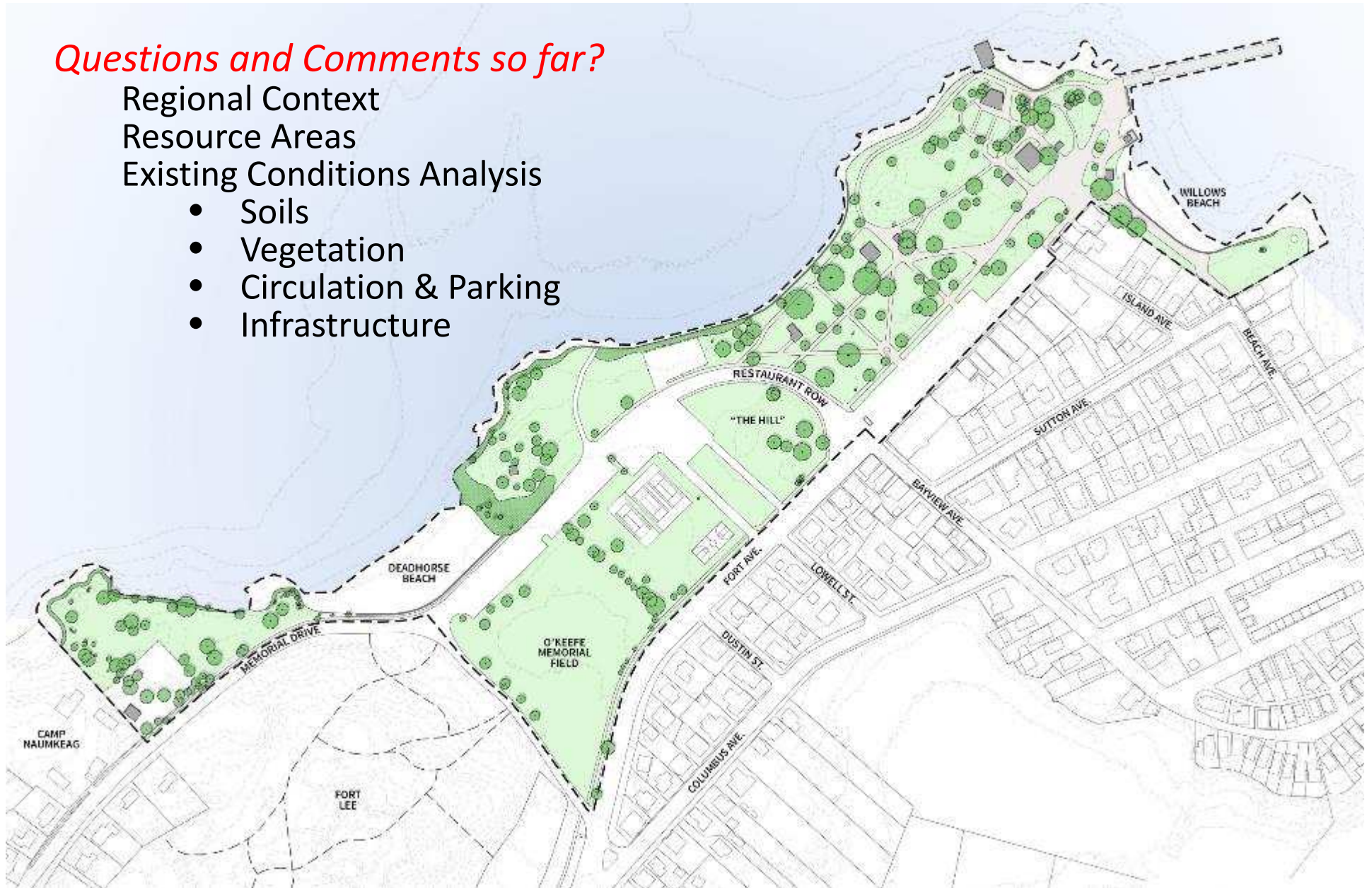
Questions and Comments so far?

Regional Context

Resource Areas

Existing Conditions Analysis

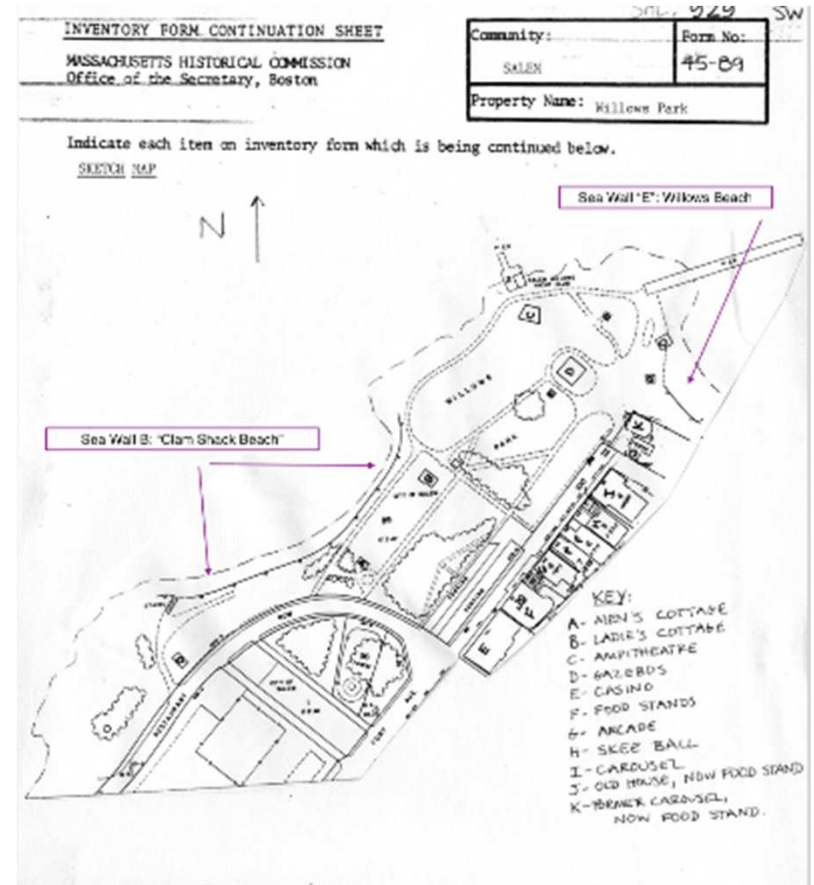
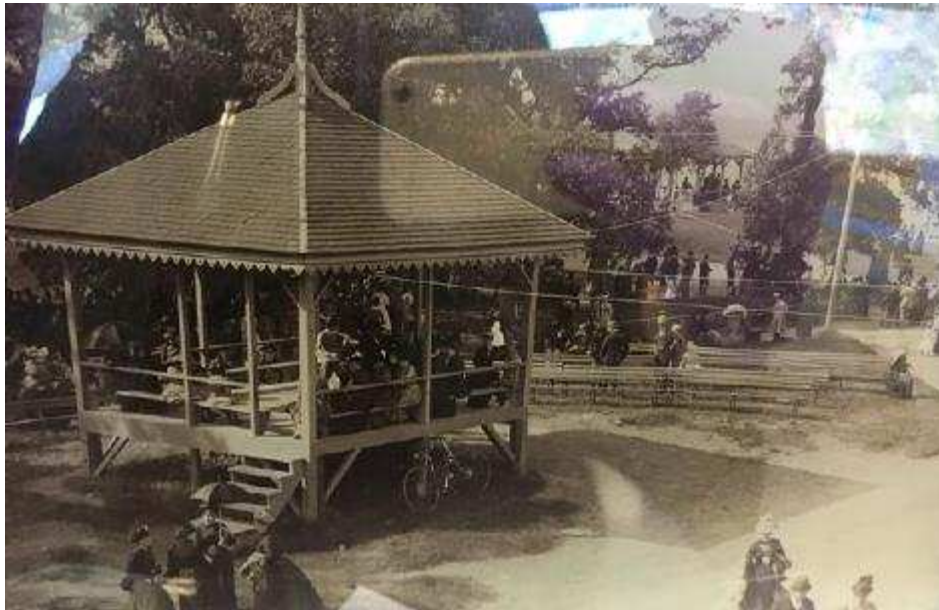
- Soils
- Vegetation
- Circulation & Parking
- Infrastructure



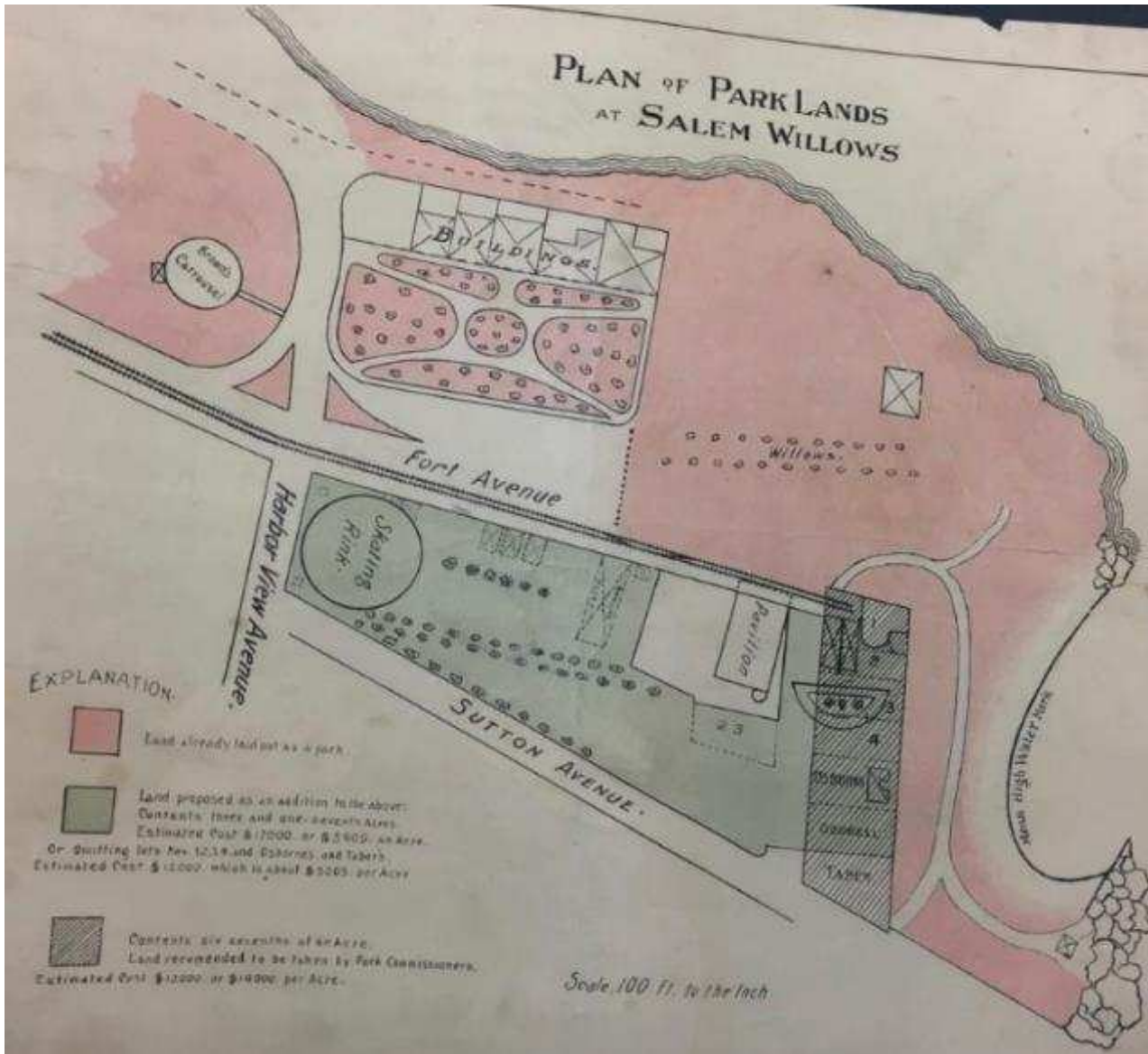


Contributing Resources Identified in 1994 Historic Register Application

1. Clam Shack: “Men’s Cottage” 1905
2. Public Restrooms: Ladies Cottage” 1904
3. Pavilions A-E: “Gazebos” 1880 - 1890
4. Sea Walls (3): 1899 – 1901
5. Salem Willows Gate: 1909
6. Granite Steps: ca 1900



1991 Sketch Plan: location of Contributing Resources. SAL.929



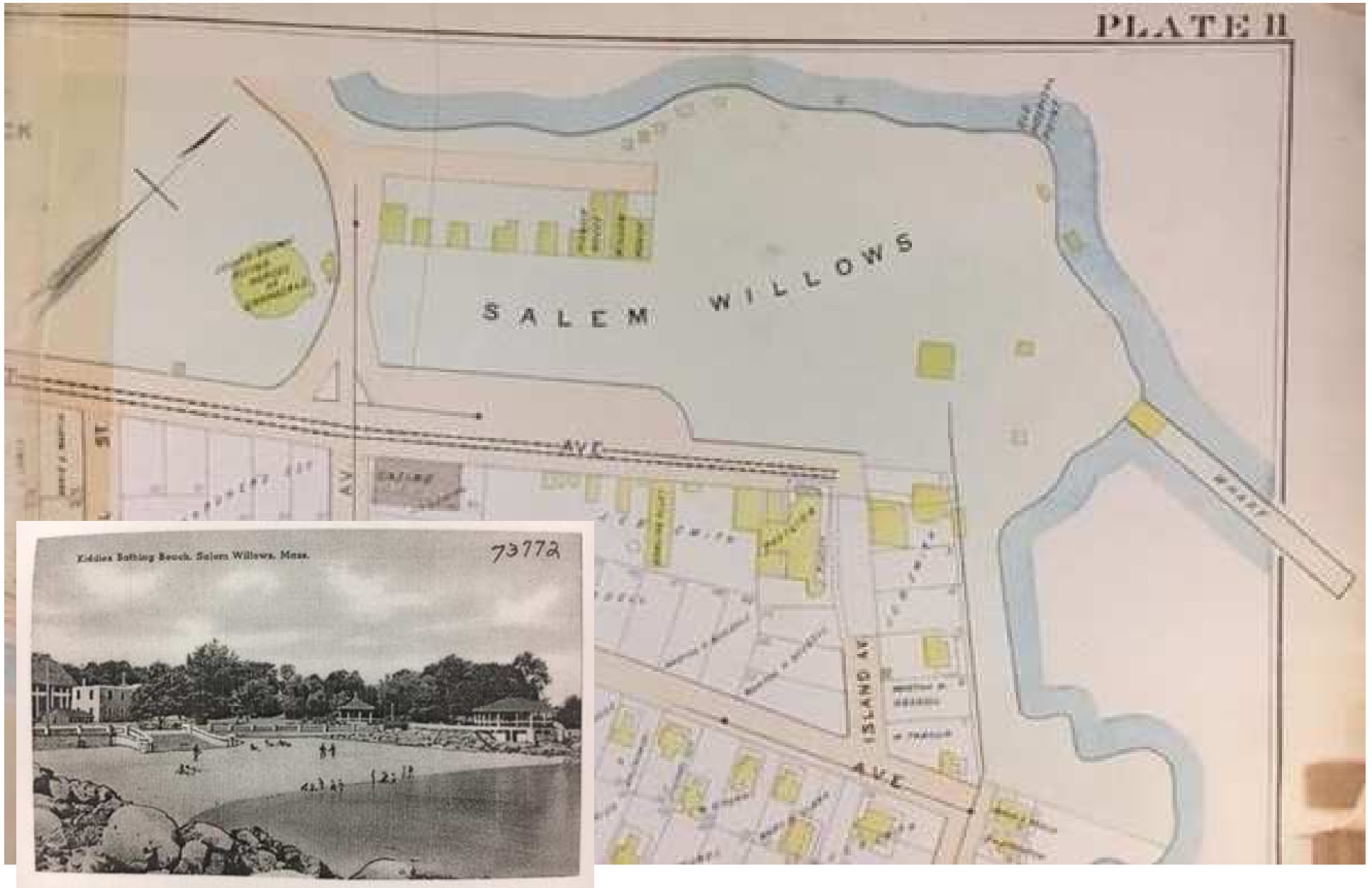


PLATE II

SALEM WILLOWS

AVE

ISLAND AV

AVE

Kiddies Bathing Beach, Salem Willows, Mass.

73772



1897 Atlas
Salem Willows **Existing Conditions**



Resources Added Through 1966

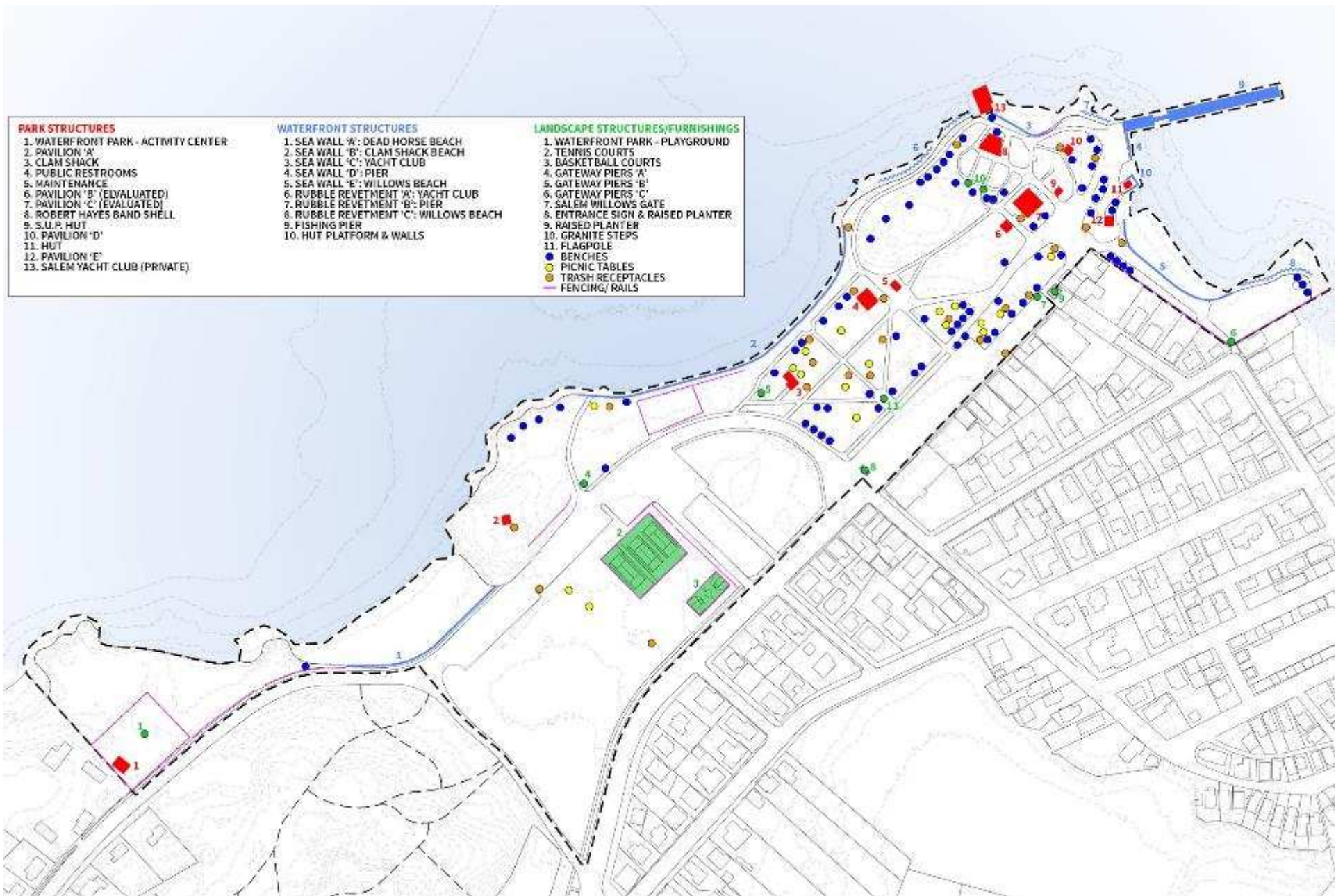
1. Maintenance Shack
2. Robert Hayes Band Shell: ca 1966
3. Hut and Walls
4. Formal Axial Circulation Plan



Source: USGS

Resources Added Since 1994

1. Waterfront Park Activity Center
2. Landscape Structures and Furnishings:
3. Waterfront Park – Playground
4. Tennis Courts
5. Basketball Court
6. Gateway Piers
7. Entrance Sign and Raised Planter
8. Raised planter
9. Flagpole
10. Benches
11. Picnic Tables
12. Trash Receptacles
13. Parking Meters
14. Fence and Guide Rails



Source: Hatch

Structures Salem Willows **Existing Conditions**



Park Structures
Salem Willows **Existing Conditions**

Park Structure Review

All structures appear to be maintained in keeping with their original character, however some maintenance/ upgrades are required:

1. Structural/Material Upgrades
 - Replacement of roofs, siding, post bases
 - Rotted wood
 - Rusting metal doors
 - Missing/broken glass
 - Cracks in Slab
 - Waterproofing
2. Modification of Construction Details
3. Painting
4. Code Compliance Issues
 - Wiring
 - Entrances
 - Accessible Route/ Ramps
 - Handrails/Guards
 - Bathrooms (fixtures and accessibility)
 - Fire Protection
 - Signage (with Braille)





HATCH

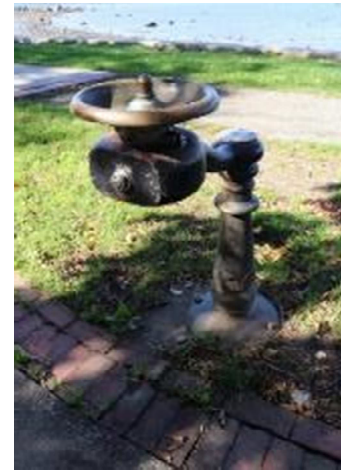
Marine Structures
Salem Willows **Existing Conditions**











Landscape Structures/ Furnishings
Salem Willows **Existing Conditions**



Signage
Salem Willows **Existing Conditions**



HATCH

Signage Salem Willows Existing Conditions

Salem Willows Park Restoration Schedule

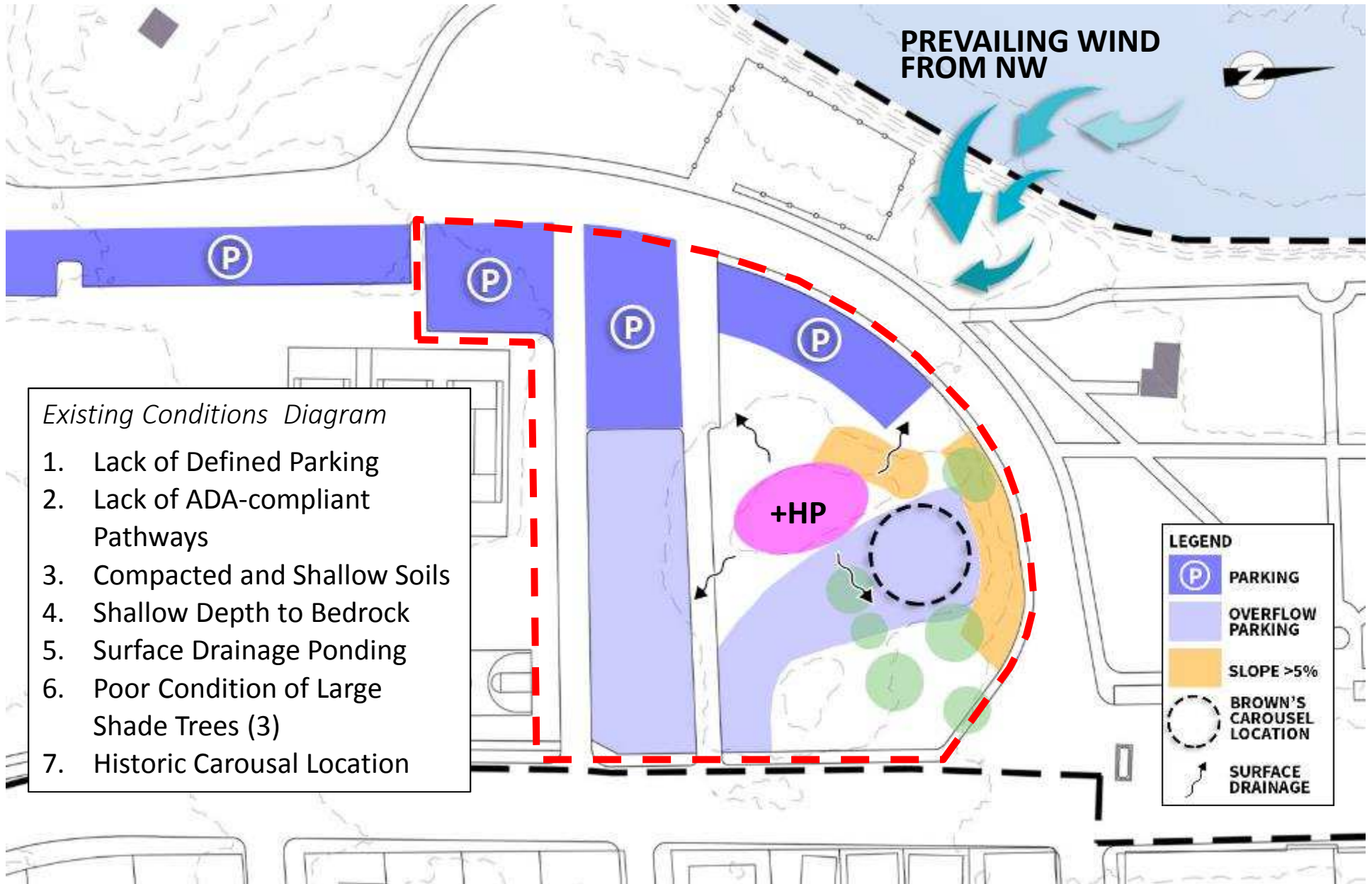
Public Meeting #2 – The “Hill” Concept Designs - Late January

Public Meeting #3 – The “Salem Willows Plan” - March



Project Schedule
Salem Willows **Existing Conditions**







Questions and Comments

