

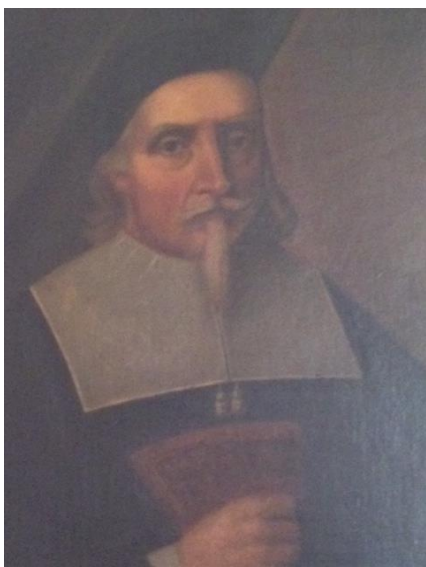
ADDENDUM #2
REQUEST FOR PROPOSALS R-21
PAINTING RESTORATION
AUGUST 31, 2015

Question:

1. What are the overall dimensions of the paintings (height and width of each one) and can an image of each painting be provided?

Please see attachment below.

Conservation and Restoration of Historic Artwork



John Endecott

Portrait of John Endecott painted by George Southward in 1873. The painting was presented by WM. G. Endicott to the city of Salem in 1892. The subject, John Endecott, who was born c. 1588 and died March 15, 1665, served as the first governor of the Massachusetts Bay Colony in 1629.

He served as either governor or deputy governor for a combined 21 years in office between 1641 and 1664. The painting is a copy, possibly of the original thought to be painted by Augustine Clement in 1665 which is located in the state house in Boston.

John Endecott portrait:

Width (w/o frame) - 2 ft 5.5 inches, Width(with frame) - 3 ft 4 inches
Height (w/o frame) - 3 ft, Height(with frame) - 4 ft



Simon Bradstreet



Portrait of Simon Bradstreet by an unknown artist painted and presented to Salem in 1892. Simon Bradstreet, a resident of Salem, was born March 18 1603/4 and died March 27, 1697. Among others including John Winthrop, Bradstreet helped to found Boston, the capital of the Massachusetts Bay Colony. Before he served as the last governor of the Colony, Bradstreet and Endecott, the subject in the aforementioned painting, were at odds with each other over beliefs concerning charter rights. Fittingly the two face each other as they hang on opposite walls. His wife, Anne Bradstreet was the first woman to publish poetry under British North American Colonies. Further research will be necessary to try to determine the artist.

Simon Bradstreet portrait:

Width (w/o frame) - 2 ft 2 inches, Width(with frame) - 3 ft 4 inches
Height (w/o frame) - 2 ft 9 inches, Height(with frame) - 3 ft 11 inches



John Glen King



Portrait of John Glen King painted by Frank W. Benson. The subject, John Glen King, was born in Salem on March 19, 1787 and died June 26, 1857. He graduated from Harvard College in 1807 where he studied law. He went on to serve in both branches of the Massachusetts state legislature and was also appointed as the first president of the common council in Salem. The artist, Frank W. Benson, is celebrated as one of America's best impressionist painters. Benson was a native of Salem, born into a prosperous old Salem family on March 24, 1862, and died on November 15, 1951. He spent much of his life in New England, where he painted his best known works. The painting in City hall by Benson is a copy of the original painting by the artist Charles Osgood, a Salem artist who painted many portraits for Salem. Further

research may yield the exact year or approximate years in which Benson created the painting and when it was presented to the city of Salem.

John Glen King portrait:

Width (w/o frame) - 2 ft, Width(with frame) - 2 ft 9 inches
Height (w/o frame) - 2 ft 6 inches, Height(with frame) - 3 ft 6 inches