



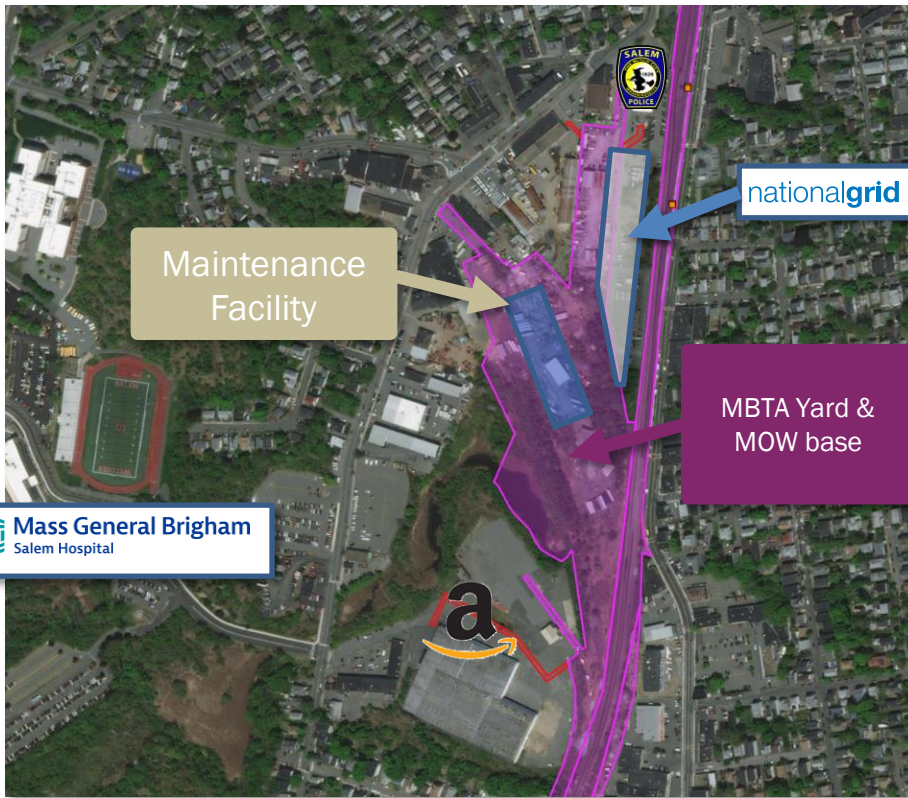
**Massachusetts Bay
Transportation Authority**

MBTA South Salem Commuter Rail Stop Conceptual Design

*Neighborhood Meeting
June 18, 2024*

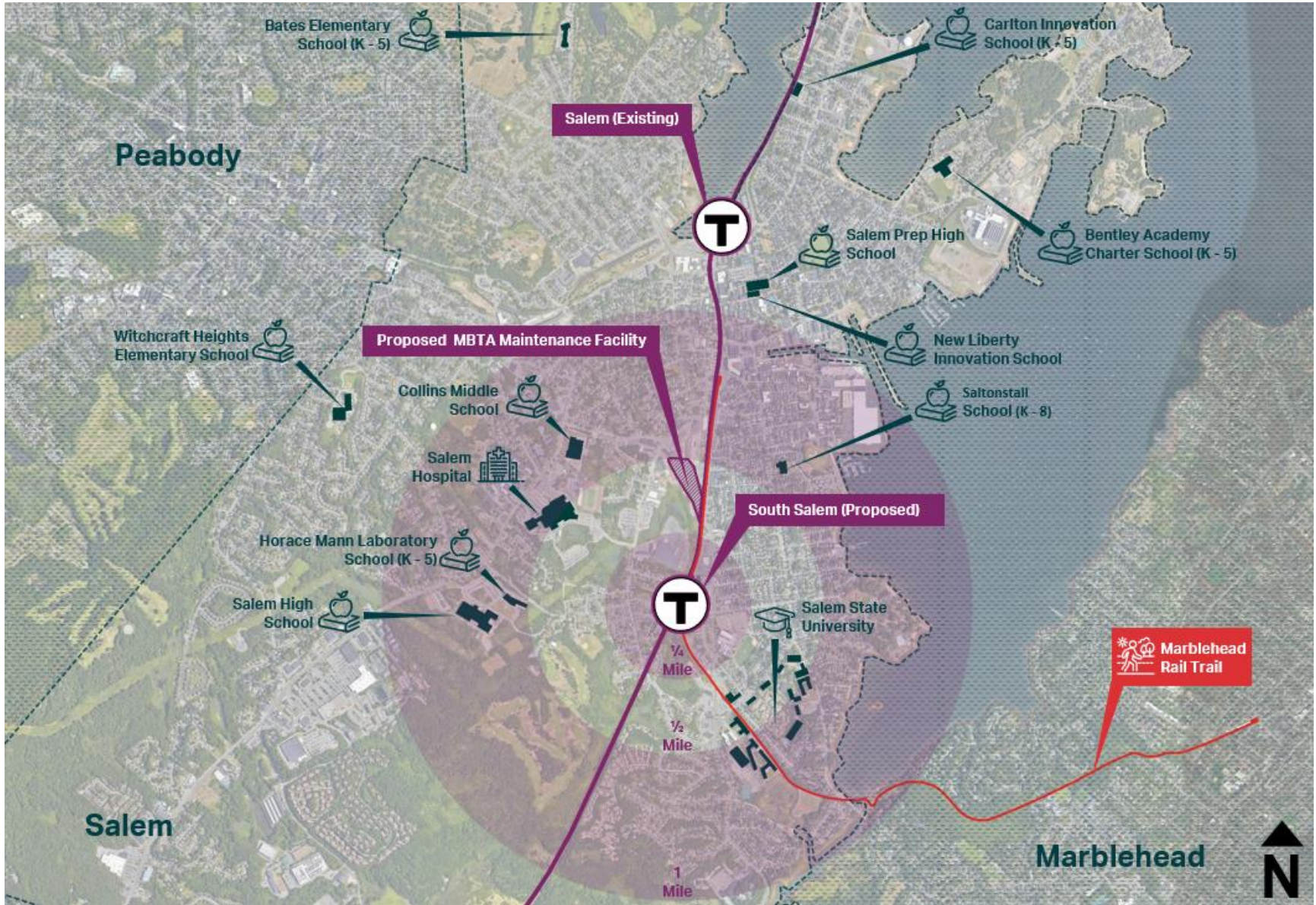
Location of Maintenance Facility

Choice of South Salem



- Historic Castle Hill Rail Yard in Industrial Zone
- Adjacent to National Grid (125kV)
- Share facilities with existing maintenance of way (MOW) headquarters (access, parking)
- Only viable EJ Corridor location on MBTA land
- Everett, Revere and Lynn sites too small without significant land acquisition

Project Context



MBTA South Salem Stop

Limits of Aerial Survey



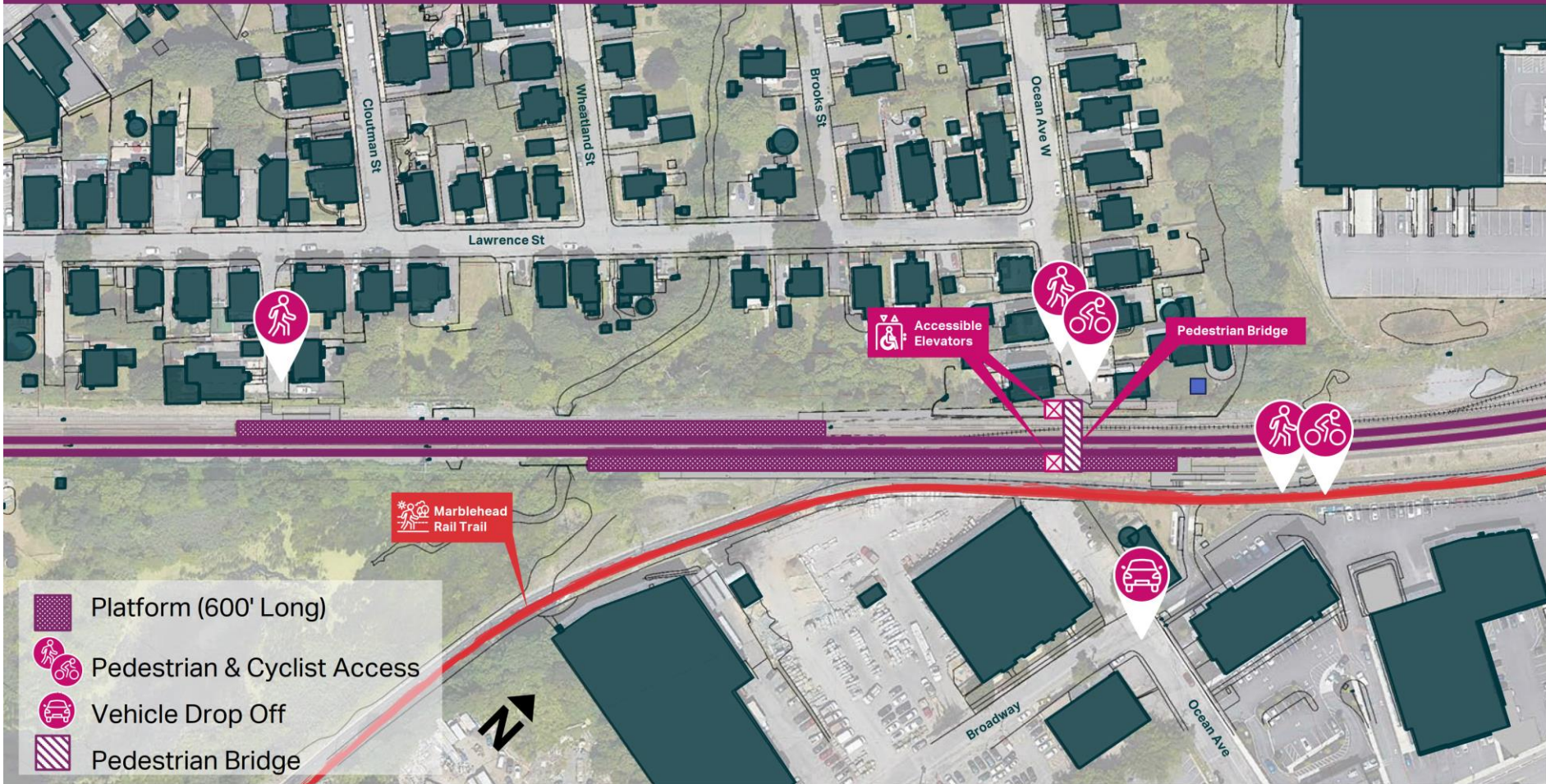
- Additional field survey along Ocean Ave West and Lawrence Street on-going

Site & Track Constraints

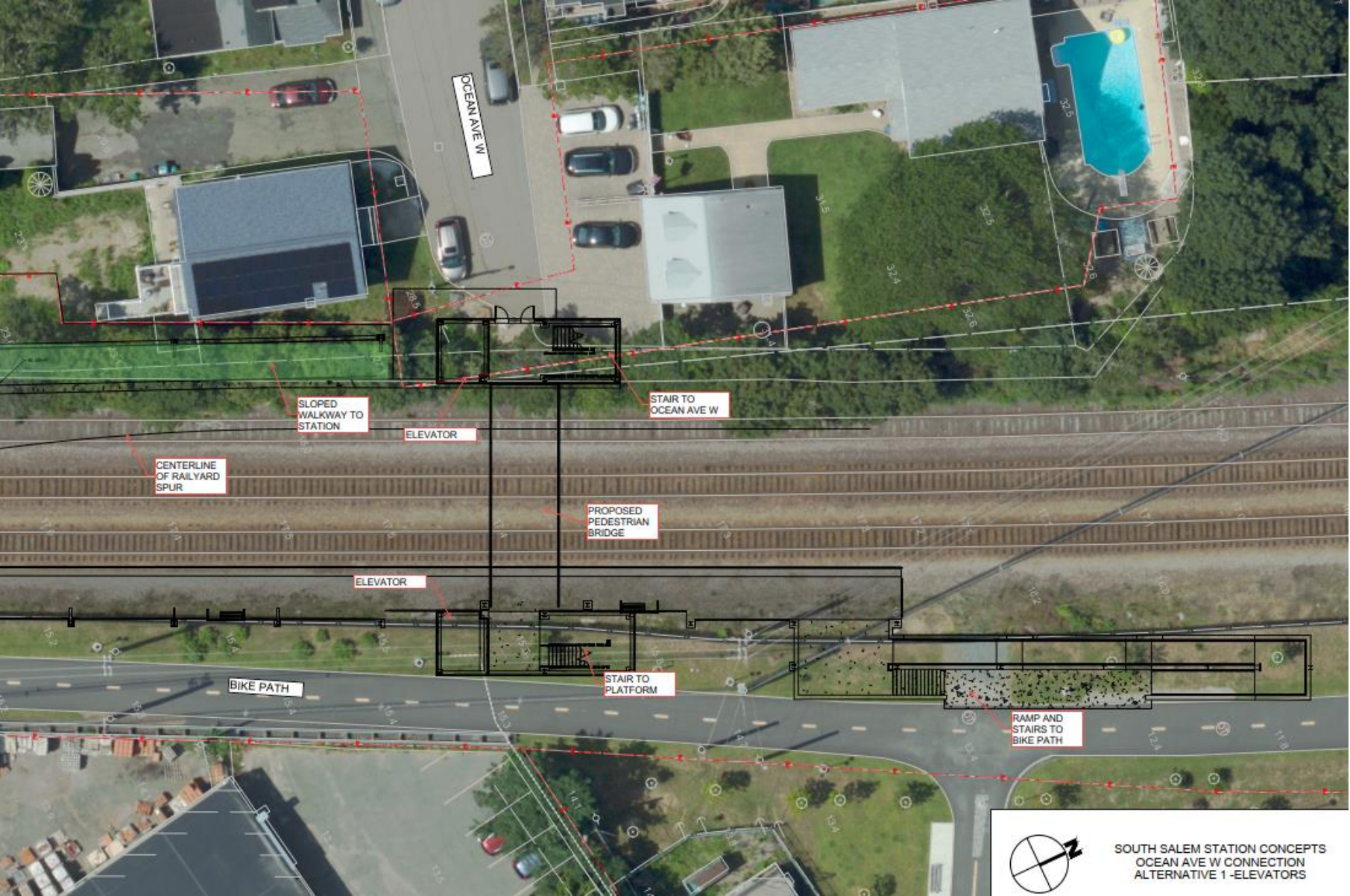


Ocean Ave West Connection

South Salem – Circulation & Mode Transfer Plan



Ocean Ave W Alternative 1 - Elevators



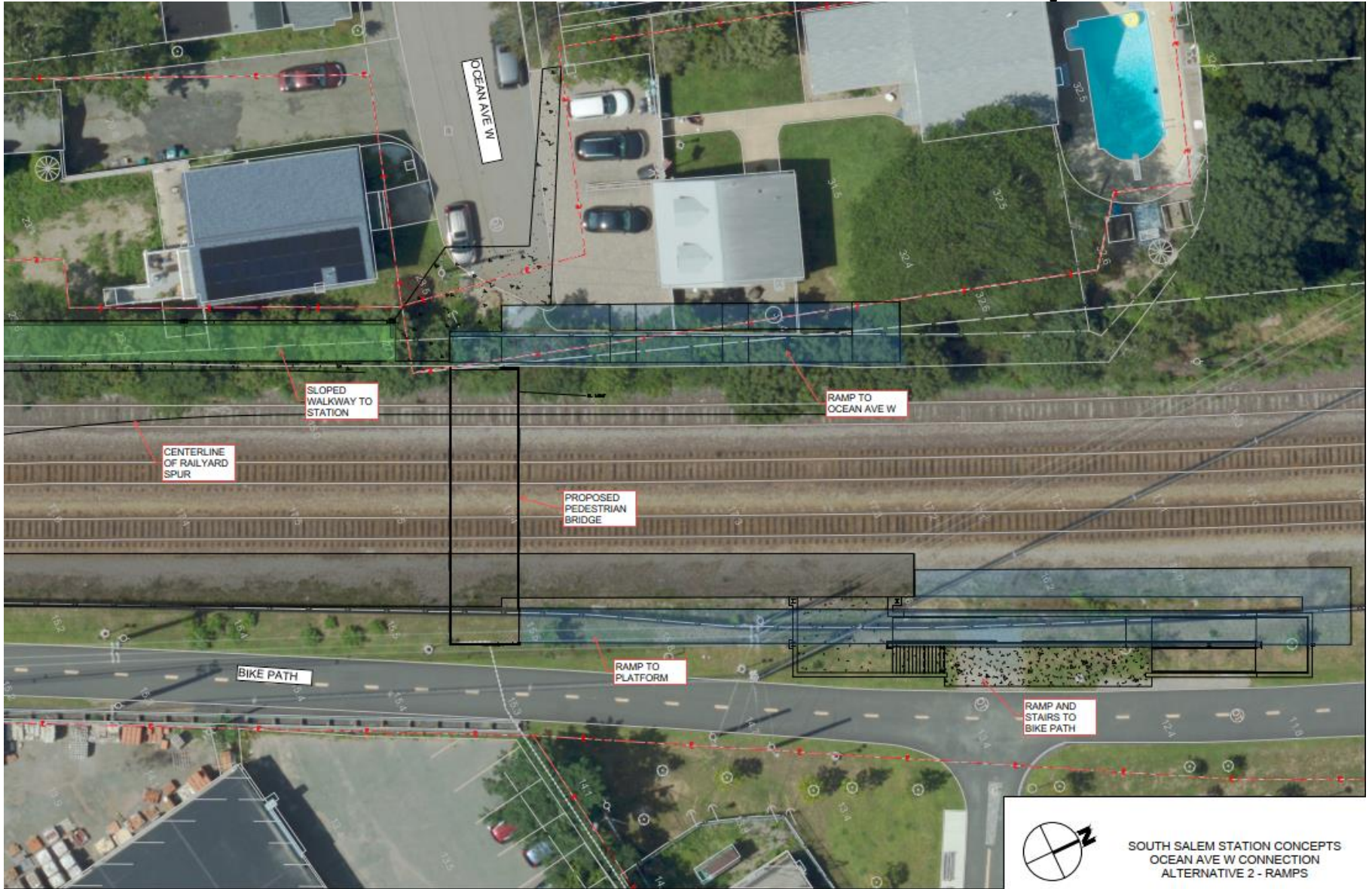
MBTA South Salem Stop



SOUTH SALEM STATION CONCEPTS
OCEAN AVE W CONNECTION
ALTERNATIVE 1 - ELEVATORS



Ocean Ave W Alternative 2 - Ramps



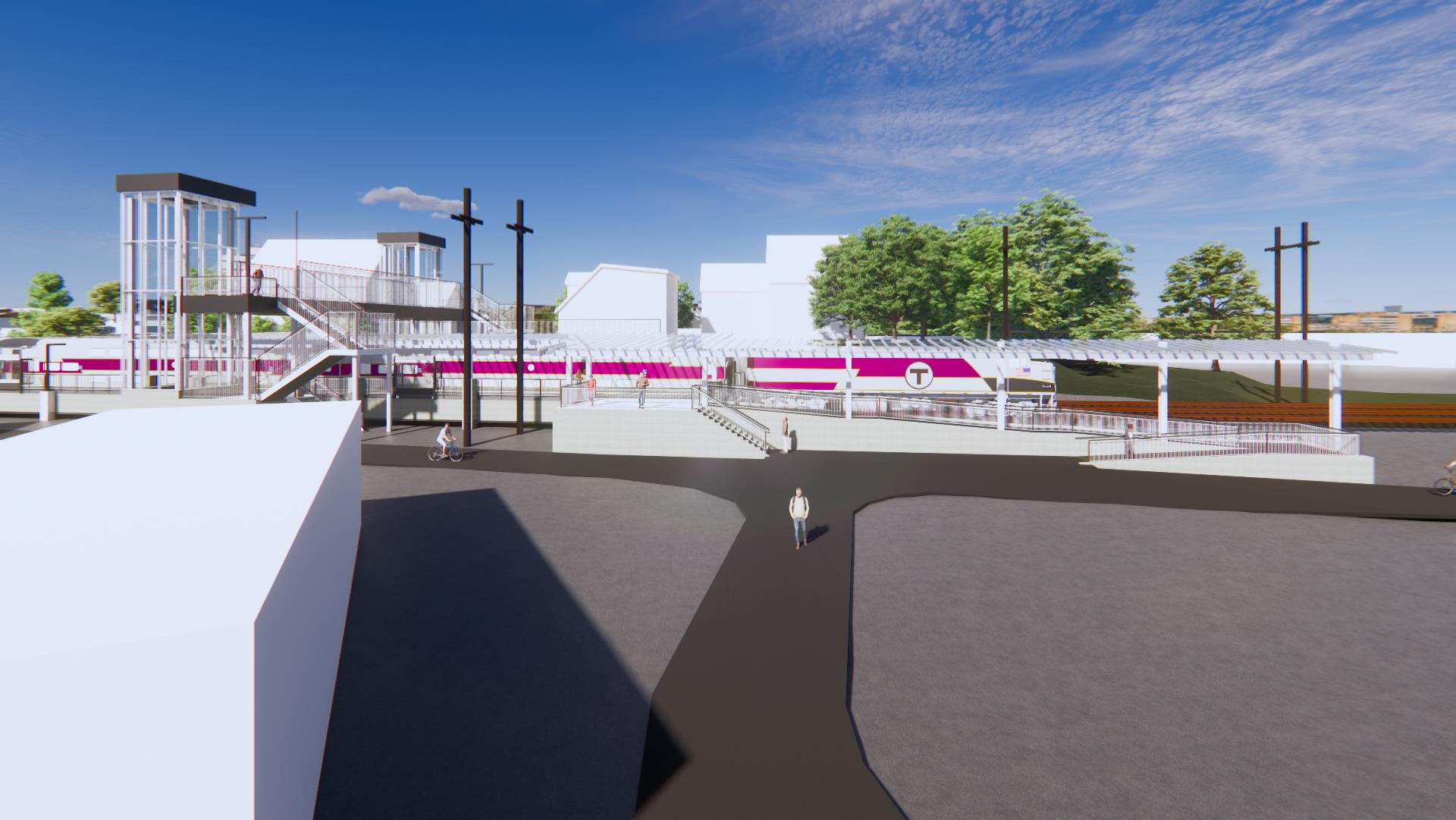
Bike Path Facing West Renderings



View of bridge towards Ocean Ave W (Enclosed)

MBTA South Salem Stop

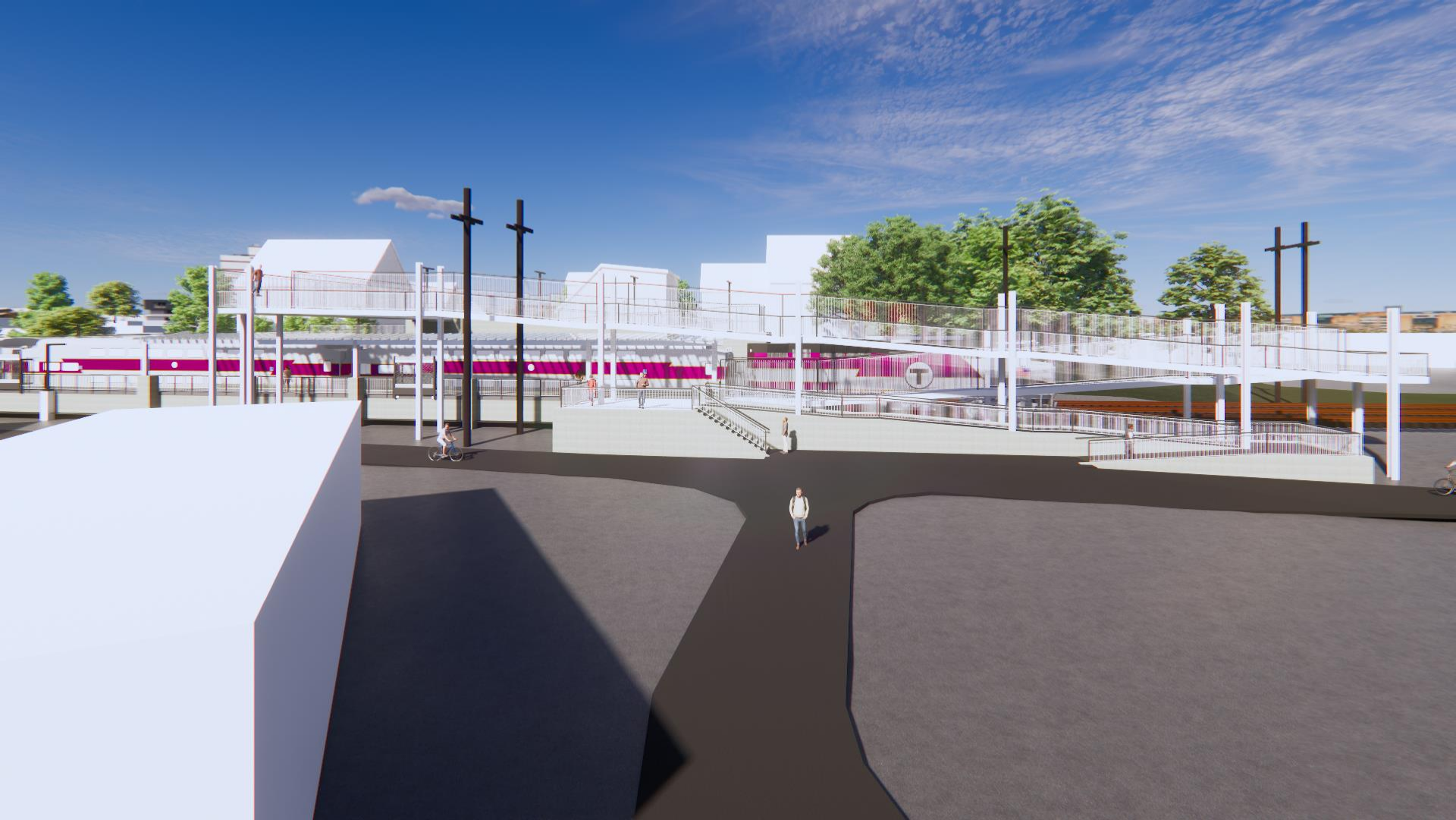
Bike Path Facing West Renderings



View of bridge towards Ocean Ave W (Open)

MBTA South Salem Stop

Bike Path Facing West Renderings



View of bridge towards Ocean Ave W (Ramps)

MBTA South Salem Stop

Ocean Ave West Renderings



View of bridge from Ocean Ave W (Enclosed)

MBTA South Salem Stop

Ocean Ave West Renderings



View of bridge from Ocean Ave W (Open)

MBTA South Salem Stop

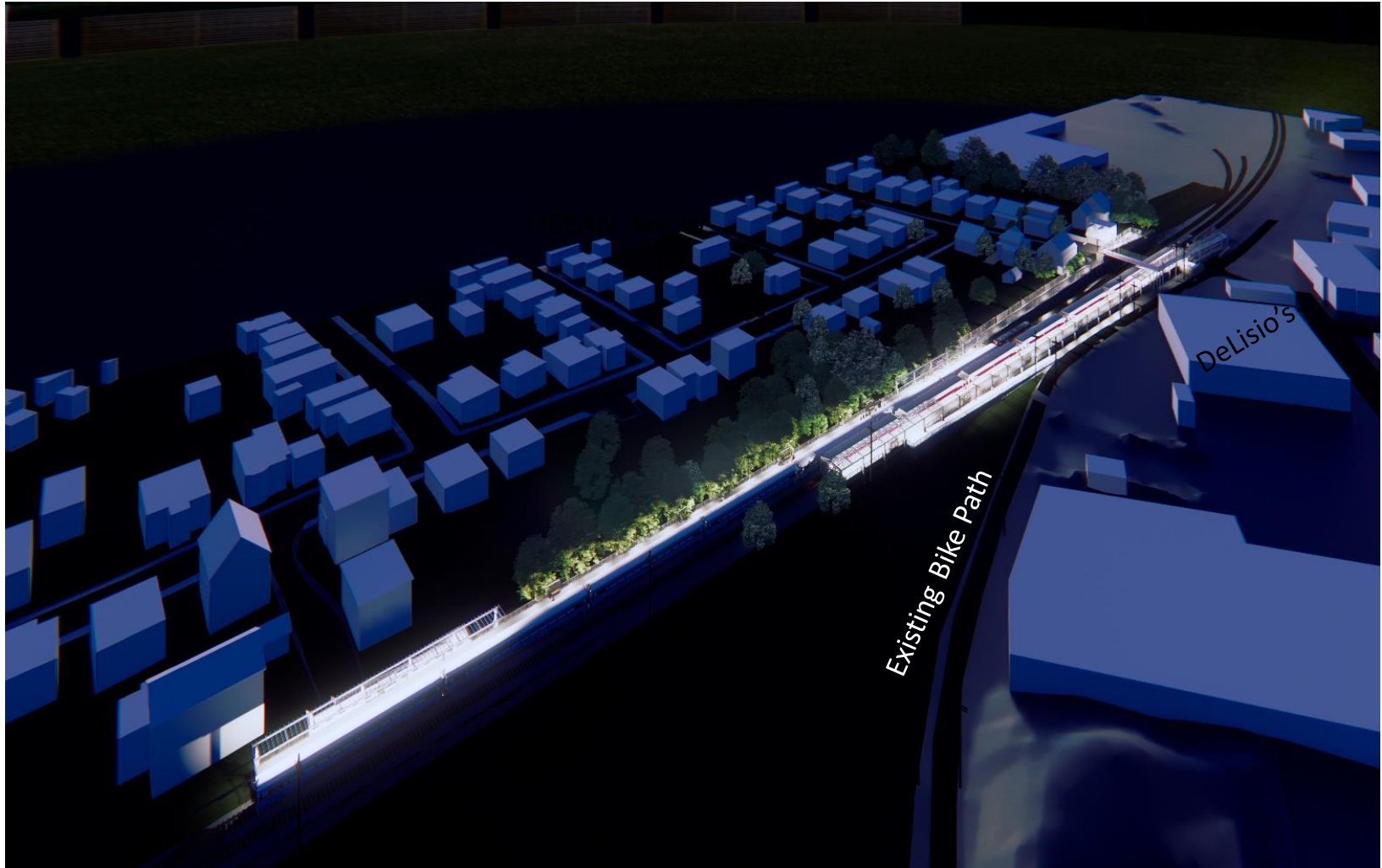
Ocean Ave West Renderings



View of bridge from Ocean Ave W (Ramp)

MBTA South Salem Stop

Overall Lighting Rendering



View of platforms and bridge facing west

Ocean Ave West Renderings



View of platforms and bridge facing west

Ocean Ave West Renderings



OCEAN Ave W

View of platforms and bridge facing North

MBTA South Salem Stop

Ocean Ave West Renderings



View of platforms facing south from pedestrian bridge

MBTA South Salem Stop



Next Steps

- **Await RAISE Grant Application Award (End of June '24)**
- **Finalize Alternatives Analysis**
- **Outreach and Refinement of Alternatives**
- **Coordination with City and other Stakeholders**
- **Coordination with MBTA maintenance facility project**
- **Submit final conceptual design and estimate Nov 2024**